

NEWS

*Chase bank seeks
a Fillmore home*

PAGE 3



LOCALS

*Turning letters
into treasures*

PAGE 6



HOME & GARDEN

*A series of
outdoor rooms*

PAGE 19

THE NEW FILLMORE

SAN FRANCISCO ■ OCTOBER 2010



A Walking Tour of Pacific Heights

OUTER BROADWAY — the Gold Coast — and nearby blocks are classic Pacific Heights: a quiet residential neighborhood with beautiful views and flowers in bloom all year round.

Some of the largest and most magnificent homes in the city are in this area — many designed by San Francisco's finest architects, with Willis Polk at the top of the list.

Pacific Heights covers 130 square blocks, from Van Ness Avenue on the east to Presidio Avenue on the west and from California Street on the south to Union Street on the north. It reaches its zenith at the crest of one of San Francisco's 42 hills, 370 feet above sea level.

Longtime neighborhood resident Marilyn Straka leads walking tours of Pacific Heights. Inside, she shares highlights.

THE TOUR | PAGES 9 - 11

The Board of
The Pacific Heights Residents Association
Invites You to Join PHRA and
Attend Our Annual Meeting

Tuesday, October 19, 2010, 6 pm to 8 pm
Schools of the Sacred Heart
2222 Broadway at Webster Street



Wine Reception and Hors D'oeuvres
Hear About Neighborhood and Local Issues

and

Special Guest Speaker

C. W. Nevius, Columnist, San Francisco Chronicle

Cost to attend is \$35 for members and \$70 for non-members which includes a one-year PHRA membership.
Please RSVP to info@phra-sf.org or call (415) 922-3572 by October 8th.

Help Pets Unlimited Secure a \$100,000 Challenge Match!

If we raise \$100,000 by **December 31**,
we will receive a \$100,000 anonymous
gift in support of our shelter and
charitable programs!



\$100,000
Donated from the Community

+



\$100,000
Challenge Match Donation

=



\$200,000
For cats and dogs in need!

Every dollar helps us reach our goal.
Please make a gift today!

NEWFILLMORE.COM



'You Gotta Carry a Gun'

So Ruth Dewson (above) was told when she opened Mrs. Dewson's Hats on Fillmore 38 years ago. For decades she has been the unofficial mayor of Fillmore Street. But she has often been missing from the neighborhood in recent months, sidelined by ill health. We caught up with her at her shop and found her spirit strong and her health improving. In a video interview, she tells how she came to open a hat shop on Fillmore Street in a space left vacant when a congregant of the People's Temple left to follow Rev. Jim Jones to Guyana. See "The Hat Lady" at newfillmore.com.



Other videos on the website include "Return to Crissy Field" (left) about a group of friends who've been walking together on Saturday mornings for 25 years.
The neighborhood website also includes Street Talk, updated throughout the month, and an archive of stories and photographs. We welcome your comments and links.

LETTERS

TO THE EDITORS:

Enclosed is a check for \$30 to continue my subscription. I look forward to another year of your delightful news and increasingly handsome pages.

It is a relief to know from your August issue ["Walter Is a Girl,"] that Walter Cronkite, despite the moustache, is a mother of only four kittens.

MARION SEAWELL

Regarding your article on the theaters in the Fillmore District ["Palaces for the People," September 2010], we also had the Ellis Theater on Ellis Street near Steiner. We had the American Theater on Fillmore Street near Turk. We had the Spanish Theater on Sutter Street between Fillmore and Steiner. That's just a few more of the theaters we had at one time in the Fillmore District.

VIA VOICE MAIL

THE NEWFILLMORE

newfillmore.com

2130 Fillmore Street #202 • San Francisco, CA 94115 • 415.441.6070
editors@newfillmore.com

Editors | Barbara Kate Repa & Thomas R. Reynolds
Production | Ginny Lindsay Proofreader | Donna Gillespie
Marketing Director | Jay Singh

Advertising inquiries ads@newfillmore.com or 415.441.6070
Published on the first weekend of each month. Deadline: 20th of prior month
Subscriptions by mail are available for \$30 per year. Please send a check.

Connecting the neighborhood

Every month, 20,000 copies of the New Fillmore are delivered to homes and businesses in the Fillmore, Pacific Heights and Japantown. We thank you for your support and encouragement and welcome your ideas and suggestions.



newfillmore.com | updated all month, plus an archive of back issues

STREET TALK



Au revoir to Patisserie Delanghe

After 26 years of buttery croissants, Patisserie Delanghe closed with no fanfare on September 30. Dominique and Marie-Jeanne Delanghe said they will retire. Their corner of Fillmore and Bush will lose its French accent: The successor is the Fillmore Bake Shop.

SWEET NEWS: It won't be quiet for long at Sutter and Steiner, where the classy French restaurant Cassis and longtime local favorite Neecha Thai have both closed. Cassis will be replaced by Sweet Maple, which will forgo dinner and concentrate on breakfast and lunch. ... Neecha will be replaced by a new Thai restaurant called Mehfil will open any minute now at 2301 Fillmore, former home of Crepevine and the late and much-lamented Alta Plaza. The owners are already in business south of Market at 600 Folsom.

CITIZEN CAKE: What the heck's taking so long? EaterSF reports: "Although construction is 90 percent finished at the new 2125 Fillmore Street incarnation of Citizen Cake, Elizabeth Falkner is still in a bit of a holding pattern with her contractor."

MORE INDIAN: A new Indian restaurant called Mehfil will open any minute now at 2301 Fillmore, former home of Crepevine and the late and much-lamented Alta Plaza. The owners are already in business south of Market at 600 Folsom.

CITIZEN CAKE: What the heck's taking so long? EaterSF reports: "Although construction is 90 percent finished at the new 2125 Fillmore Street incarnation of Citizen Cake, Elizabeth Falkner is still in a bit of a holding pattern with her contractor."

NEIGHBORHOOD NEWS

Chase Bank Looking for a Local Home

CHASE — formerly Chase Manhattan Bank and now the consumer banking unit of JP Morgan Chase — hopes to open a new branch bank at 2429 California Street.

At a neighborhood meeting on September 27, representatives of the bank presented plans for a banking office fronted by a secure ATM lobby next door to Mollie Stone's in the long-time home of Esrik Cleaners. The cleaners closed last year and the building has since been expanded and renovated into two storefronts.

In the past, Chase was largely an East Coast bank.

In 2008, the company came to the West Coast after it acquired the banking operations of the failed Washington Mutual Bank.

"In 2008 Chase had no branches here," said Greg Endom, real estate director for Chase in San Francisco. "Now we have 23 — but there are some very dramatic holes."

Endom said the bank will be opening new branches to fill those voids.

"Some will be downtown, some will be in the neighborhoods," he said.

Endom said Chase already has 2,500 customers in this neighborhood not being adequately served by its existing branches on Polk and Chestnut Streets.



Chase Bank hopes to take over the former cleaners at 2429 California.

"They hope in three or four years they'll have 50 branches in the city," Endom told neighborhood residents who attended its pre-application meeting, which was required before the bank can apply for a conditional use permit to occupy the space. "They're not going to be a good neighbor."

Neighbors questioned whether the bank was the right fit for the location.

"I've heard a lot about why this is good for Chase," said Paul Werner, a director of the Pacific Heights Residents Association. "But not how it contributes to the neighborhood. It's not clear to me that having a bank here is the best use of this property."

Joan O'Connor, a director of the Fillmore

Merchants Association, said many local merchants had been pleased when the cleaners was rebuilt as two retail spaces. Their reaction when they heard Chase wanted the space, she said, was, "Oh no, it's another corporate place. The rents are gonna keep going up."

Chase architect Young Wong presented plans for combining the two retail spaces in a \$1.75 million project he said would be "nicely and tastefully done." He said it would be better for the neighborhood to get one long-term commercial tenant than two retail tenants who might not survive.

"It actually makes more sense," he said, "not just for the tenant, but also for the neighborhood."

Wong and Endom both said they would work to revise their initial plans so that the bank, if approved, puts a friendlier face to the street, rather than merely a locked lobby of ATM machines.

"How do we do something different?" asked Endom. "That's our job. It's a challenge we have to try to figure out how to solve."

Endom said Chase is aware it needs to find ways to contribute to the community, but offered no specifics.

"What can we do to be a part of the neighborhood?" he asked. "I don't have the answer yet."

no limits in creative solutions



no design should be too predictable. no design should be unattainable.
no limits in BoConcept.

At BoConcept we understand how challenging home styling can be — whether you're decorating a new home, starting a room makeover or buying new furniture, converting your vision into reality can be a daunting task. That's why, when you visit your local BoConcept store, you will find trained design consultants who can help you overcome even the trickiest interior challenges. During the month of October we're extending a special offer on our in-home design consultation service — all in-home design consultation orders of \$5,000 or more will enjoy 10% off from October 1 — 31, 2010. So stop by your local store today or go online to book your in-home design consultation.

www.BoConcept.com

BoConcept SOMA • 101 Townsend Street • San Francisco, CA 94107 • 415.371.0100 • soma@boconcept-ca.com
BoConcept Fillmore • 1928 Fillmore Street • San Francisco, CA 94115 • 415.625.2800 • fillmore@boconcept-ca.com

BoConcept
urban design

VOTE NO ON G It's not real Muni reform



Prop G says it's about fixing Muni. But the only thing it does is unfairly go after drivers - while doing nothing about bad management and real problems of Muni.

- Management is the problem with Muni.** The top manager at Muni made \$354,000 last year - the highest paid official in San Francisco - yet Muni management gets worse each year.
- Prop G doesn't improve Muni management.** Prop G does nothing to increase management accountability or efficiency. It gives the bureaucrats a free ride, while going after the drivers as if they are the problem.
- Muni drivers are part of the solution.** Muni drivers are on the front lines, keeping passengers safe, driving our transit routes, helping disabled passengers. They work hard under tough, sometimes unsafe conditions. They're part of the solution, not the problem.
- Demand comprehensive, fair reform.** Prop G singles out Muni drivers with the most unfair collective bargaining standards of any city union. That's not fair - and it won't fix Muni.

Get the facts. Vote NO on G.

Transit Workers Union, Local 250-A, AFL-CIO Special Fund FPCC#744486

CRIME WATCH

Aggravated Assault With Knife Bush and Webster Streets August 20, 3:45 p.m.

Several units from Northern Station responded to a report of a stabbing. A man had been injured with a razor. Officers learned that the man knew the suspect, who was upset and had become confrontational. The suspect first pulled out a utility knife and threatened him, then produced the razor, cutting through the man's clothing and causing a laceration. At the suspect's home, the officers found the knife used in the attack. He was booked for assault.

Unlawful Entry Eddy and Laguna Streets August 22, 6 p.m.

Before their shift began, two officers were given a description of a man wanted for a residential burglary. They immediately recognized the man from his picture, and were aware of the places he frequented. Later, as they were patrolling Eddy Street, they spotted him. They took the man into custody for an outstanding parole warrant, and the inspector in charge of the burglary case questioned him at Northern Station.

Felon Carrying a Concealed Weapon Fillmore and Bush Streets August 23, 11:30 p.m.

Officers working in plainclothes were sent to a residence in search of a man who was wanted in Ventura County, but the suspect was not there. The officers then noticed a man nearby who was fidgeting with a bike lock. They asked the man for identification, and learned this was the individual they were seeking. The man was taken into custody. During a search, they found a dagger in his pocket. The suspect was booked at Northern Station.

Warrant Violation Van Ness Avenue and Fern Street August 25, 8:45 a.m.

An officer with Homeless Outreach responded to a complaint regarding a man who was sleeping in an alley. When the officer arrived he saw a man asleep, wrapped in blankets. After a computer check revealed there were four active warrants for his arrest, the man was booked.

Loitering for the Purpose of Prostitution Van Ness Avenue and Bush Street August 26, 2:30 a.m.

Officers on patrol observed a woman they had earlier advised to leave the area. She was standing on the corner garbed in an outfit consistent with the clothing favored by prostitutes. A computer check showed she had an active warrant in the city of Turlock. The officers placed her under arrest and she was booked at the county jail.

Driving Under the Influence Sacramento and Gough Streets August 26, 9 p.m.

An officer in a patrol car noticed a driver at a stop sign grinding his gears and racing his engine. The driver appeared to be having difficulty focusing; he then slowly moved his car. Its headlights were not on, so the officer used his PA system to tell the driver to turn on his lights. The driver looked around to see where the voice was coming from, while continuing to race his engine. The officer activated his lights and siren, but the driver paid no attention. He then pulled over the driver, who stumbled onto the street. The officer could smell a strong odor of alcohol emanating from the man. A breathalyzer test showed his level was .20 percent, well above the legal limit. He was booked at county jail.

Theft from Vehicle, Conspiracy Eddy and Laguna Streets August 27, 3 p.m.

Reviewing a videotape of an auto burglary, two officers were able to positively identify three of the five individuals involved in the crime. On August 26, the officers observed one of the suspects walking near Eddy and Buchanan. They took him into custody and found he was carrying a spark plug chip, commonly used to shatter car windows. The suspect was 16 years old, so the officer contacted his parents. The next day, the officers saw another of the participants in the same area. He was immediately detained. This suspect was 17 years old. Both were booked at the Juvenile Justice Center.

Loitering for the Purpose of Prostitution Van Ness Avenue and Washington Street August 28, 3 a.m.

Officers who were part of a plainclothes vice operation observed a woman standing on the corner who darted off and hid between parked cars as they drove by. Earlier in their shift, the officers had told the woman to stop loitering on this corner. During the first contact, she told the officers she was going to a bar. When the officers pointed out that all bars in the area were closed, she said she was actually just going home. The officers approached her a second time and determined she had several prostitution-related arrests, but no active warrants. She was cited for loitering and released at the scene.

Aggravated Assault, Elder Abuse Fillmore and Post Streets August 30, 6:30 p.m.

Witnesses stated that a man had thrown a woman to the ground, then walked away. Callers gave dispatch a thorough description of the suspect; officers located

the individual and followed him. When they took him into custody, he admitted to pushing the woman to the ground. The victim, who was 63 years old, sustained injuries to her knee and hand. Medics responded to the scene and treated her.

Robbery Van Ness Avenue and Geary Boulevard September 2, 3:10 a.m.

A man was checking his cell phone messages when an assailant grabbed at his phone. The man twisted away from the attacker, but the assailant punched him in the face, causing him to drop his phone. The attacker picked up the phone and dashed off with it. The man sprinted after him, catching the attention of two nearby police officers. The officers joined the chase and caught the suspect. He was arrested and taken to Northern Station.

Loitering for the Purpose of Prostitution Van Ness Avenue and Ellis Street September 6, 1:45 a.m.

Officers on patrol observed that a young woman they'd warned about loitering 30 minutes earlier was still standing on the same street corner. The officers watched as she walked up and down the street, trying to hide behind cars so they wouldn't see her. The officers continued to patrol the streets, then returned a few minutes later. They found her in conversation with a man. When she spotted the officers, she quickly parted. The officers stopped both individuals. The woman was cited for maintaining a public nuisance and the man was advised to leave the area.

Possession of Stolen Property Van Ness Avenue and Pine Street September 7, 2:20 a.m.

Officers patrolling the area spotted a motorcycle parked unattended at a gas

station. When they ran the license plate, they discovered the cycle was stolen. Several minutes later, a man walked up to the motorcycle, ready to drive it away. The police took him into custody. The suspect, who had an outstanding warrant, was charged with possession of a stolen license plate.

Robbery Van Ness Avenue and Jackson Street September 7, 11:00 a.m.

A man put his ATM card into a machine and tried to withdraw \$200. He received only \$180, so he put the card in a second time and attempted to withdraw \$20 more. When he received two receipts that showed he had withdrawn \$220, he lost his temper. He confronted the business owner, who gave him the number of the owner of the ATM machine. This man responded to the scene and attempted to settle the matter, but the ATM user started a heated argument with him, prompting him to take out his iPhone to call the police. A friend of the man who claimed to be short \$20 grabbed the owner's cell phone as payment, and the two friends went outside. Fearing he might be attacked, the ATM owner stayed inside, and asked the owner of the business to call the police. The two friends then got into a car and drove off. The arriving officers broadcast a description of the vehicle. An officer on patrol spotted it and detained the occupants, who were charged with a felony.

Prostitution Van Ness Avenue and Pine Street September 9, 4 a.m.

An officer working prostitution abatement came across one of the regulars in the trade. She advised the woman to leave the area; the suspect refused. The officer then attempted to arrest the woman, but the sus-

pect quickly walked away from the officer, ignoring her and shouting profanity. When the officer attempted to take custody of the woman, she struggled and pulled away, then ran into the lobby of a hotel. When a second officer responded to the scene, they managed to detain the woman. She was advised to stay away from the area.

Resisting Arrest Geary Boulevard and Fillmore Street September 16, 12:15 a.m.

Officers received a call concerning a physical fight involving seven people. When they arrived, two men were still fighting. The officers shouted at them to stop. A woman approached one of the officers, assumed a fighting stance, then rushed at him. The officer pushed past her toward the brawling men. More units responded to assist. As the officer was trying to separate the fighters, the woman ran at him again and struck him. He placed her in handcuffs and determined she was under the influence of alcohol. The fighting men were brothers, and did not wish to press charges against one another. The woman was booked for public drunkenness and resisting arrest.

Auto Burglary Laguna and California Streets September 22, 12:55 a.m.

An officer in a patrol car spotted a suspicious person sitting inside a car. When the officer turned his flashlight on the car, the man inside gave him a "deer in the headlights" look. Investigation revealed that the man was on parole, and therefore subject to search. The officer found burglary tools in his possession. He then located the owner of the vehicle, who told him she had parked and locked her car and hadn't given anyone permission to enter it. The suspect, who had numerous priors for the same offense, was placed under arrest.

Supervisor Sophie Maxwell says:



"Prop B unfairly increases health care costs for working families. Join me in voting NO on B."

**NO
ON B
BAD
MEDICINE
FOR SAN FRANCISCO**

PROP B WILL DOUBLE CHILDREN'S HEALTH CARE COSTS

Prop B will double health care costs for thousands of children, spouses and domestic partners of San Francisco School, Community College, Superior Court and City workers—regardless of their ability to pay.

A SINGLE PARENT WILL PAY UP TO \$5,600 MORE PER YEAR

The real impact of Prop B on working families is staggering. Under Prop B, a single mother with one dependent could be forced to pay up to \$5,600 more per year for health care—in addition to the \$8,154 she already pays. Many other employees will see their costs more than double.

A CUSTODIAN WILL PAY AS MUCH AS THE TOP BRASS

Prop B forces the custodian making only \$40,000 per year to pay the same hike in health insurance premiums as the top brass, who could be making three times as much. Many of these workers are already struggling to afford health care, and this literally takes food off their table.

COULD COST SAN FRANCISCO \$100 MILLION IN FEDERAL HEALTH CARE FUNDING

Prop B was so poorly written, the Director of the San Francisco Health Care Service System has written it could make the City ineligible for more than \$23 million in federal funding for health care next year and up to \$100 million over the next four years.

United Against Prop B

California Nurses Association
United Educators of San Francisco
San Francisco Democratic Party
House Speaker Nancy Pelosi
Mayor Gavin Newsom
State Senator Mark Leno
State Senator Leland Yee
Assemblyman Tom Ammiano
Sheriff Michael Hennessey
Board President David Chiu

STANDING UP FOR WORKING FAMILIES. NO ON B, A COALITION OF TEACHERS, NURSES, FIREFIGHTERS, PUBLIC EMPLOYEES, AND HEALTH CARE ADVOCATES. MAJOR FUNDING BY SAN FRANCISCO FIREFIGHTERS LOCAL 798 AND SEIU LOCAL 1021, 150 POST STREET, SAN FRANCISCO, CA 94108, FPCC# 1329001

CONSOLIDATED GENERAL ELECTION TUESDAY, NOVEMBER 2, 2010 REGISTER AND VOTE!

- Polling places are open from 7:00 a.m. until 8:00 p.m.
- Early voting at City Hall begins October 4
- Last day to register to vote is October 18
You must re-register if you have moved, changed your name or want to change your party affiliation
- Last day to request a vote-by-mail ballot is October 26

Be a Pollworker on Election Day!

The Department is looking for pollworkers to help on Election Day.

Pollworkers can earn up to \$170!

To sign up, visit
www.sflections.org/pw
or call (415) 554-4395.



Department of Elections • City and County of San Francisco • 1 Dr. Carlton B. Goodlett Place, Room 48 • San Francisco, CA 94102 • English: (415) 554-4375 • 中文: (415) 554-4367 • Español: (415) 554-4366 • www.sflections.org

RANKED-CHOICE VOTING

For the upcoming election, San Francisco voters who live in Supervisorial Districts 2, 4, 6, 8 and 10 will use ranked-choice voting to elect their Member of the Board of Supervisors.

Citywide, voters will use ranked-choice voting to elect the Assessor-Recorder and Public Defender.

With ranked-choice voting, the names of all the candidates are listed in three repeating columns on the ballot. This allows voters to rank up to three different candidates for the same office.



Learn More!
View an interactive demonstration of how ranked-choice voting works at www.sflections.org/demo

By TESSA WILLIAMS

"SERENDIPITY," reads an assemblage of vintage letters affixed to a wall at Timeless Treasures. Joan O'Connor's antiques store on Sutter near Pierce. "Bananas," reads another. "Slow down," a third.

An establishment that celebrates the relationship between words and objects, Timeless Treasures specializes in vintage letters, available in a vast range of sizes, types and materials. In addition to offering the groupings for sale, O'Connor prompts customers to create their own combinations that become personal works of art.

"Words are just so powerful," she says. "They can make us feel anything. And the color and variety of materials and sizes we put in the words add an extra dimension."

After a career in communications, O'Connor opened her store at 2176 Sutter Street in 1999, focusing at first on distinctive antiques she ferreted out in flea markets, auction houses and antique malls throughout Europe and the United States.

O'Connor, who honed an antique-seeking technique comprised of equal parts patience, dedication and ingenuity, says, "You really just pay attention to what it is that makes you say, 'Wow, that is so cool!'"

Sometimes that calls for guerilla tactics, as in the time O'Connor arrived so early at Bermondsey Market in London that it was still dark outside. She had to shop by flashlight, but managed to leave with a perfect blue and white serving platter she still uses.

Her foray into collecting vintage letters began a decade ago with the closing of a nearby movie theater. After learning that



And Why Not?

Joan O'Connor turns vintage lettering into Timeless Treasures

PHOTOGRAPH BY KATHI O'LEARY

the Regency Theater on Van Ness was slated to close, O'Connor's first concern was the fate of the big red plastic letters used on the marquee. After placing a few phone calls, she was told the letters were hers to rescue. She brought them to her Sutter Street shop, where they quickly became popular items — some letters of the alphabet more in demand than others.

"I was selling out of B, K, M and W," O'Connor said. "I knew if I was going to

'Words are just so powerful.'

— JOAN O'CONNOR
proprietor of Timeless Treasures

encourage people to spell out a word or phrase, I would have to have options." So she began specifically searching for vintage sign letters, alerting antique dealers and flea market vendors of her interest. She found that many antique letters of high quality and interesting design were often at risk of being thrown out by businesses that didn't value them.

In bringing vintage sign letters into her store, O'Connor found a way to pair her love of language and antique objects. Working with letters also helped O'Connor realize an artistic aptitude she didn't know she had — one that had gone unappreciated in the art classes she took growing up.

"I wasn't especially dexterous, but it doesn't mean I'm not creative," she says. "When I hit a combination like that — between the word I created and the materials and the colors — it made me feel like I created something."

In addition to the vintage sign letters, Timeless Treasures sells furniture, home decorations, greeting cards, candles and jewelry, plus a number of other word-

related gifts such as vintage rubber stamps, flashcards and postcards.

The most distinctive draw remains the letters, however — a specialty offering that brings in customers from throughout San Francisco, as well as more far-flung locations.

There was the British couple who bought a giant letter "A" they hauled back to London in their carry-on luggage, and the woman searching for a rustic letter combination to spell "cucina" in her kitchen in Georgia. There was the Australian woman who found letters to hang the words "cozy up" in her living room. One San Francisco customer searched for

just the right letters to spell her daughter's name, Diana, in the girl's bedroom to surprise her when she returned from summer camp. And the Hayes Valley restaurant Bar Jules boasts a unique sign made from Timeless Treasures letters.

Those who search far and wide for just the right letter to make just the right word usually have interesting reasons. Five years ago, O'Connor began a blog at timelesstreasures.com to record the stories behind her customers' creations and to provide an online community for those intrigued by the possibilities of communicating words through objects.

"People are amazingly creative and spontaneous and take tremendous joy in creating something personal — in creating what is in fact a piece of art," she says. "They arrange a group of letters to spell a word and it takes on new meaning."

The City | Veerakeat Tongpaiboon

MEET THE ARTIST DURING TASTE OF FILLMORE
Saturday, October 16, from 3 to 5 PM



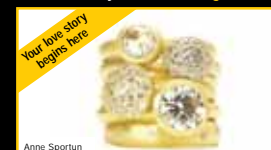
THOMAS REYNOLDS GALLERY
WWW.THOMASREYNOLDS.COM

2201 Pine Street at Fillmore • San Francisco, CA 94115 • 415/441-4093
Open Thursday-Friday-Saturday Noon to 6 PM. OR BY APPT

gallery of jewels

SAN FRANCISCO

DESIGNER HANDCRAFTED JEWELRY
Fashion, Engagement, Wedding, Commitment,
Custom Design, Conflict Free Jewelry Repair
We buy and trade gold



Anne Sportun

2101 Union Street • 2115 Fillmore Street • 4089 24th Street
WWW.GALLERYOFJEWELS.COM

taste of FILLMORE

SATURDAY, OCTOBER 16

1 pm to 6 pm

on Fillmore between Post & Jackson

FOOD & WINE FASHION HOME DESIGN

ENJOY food and wine tastings at
various boutiques and restaurants

WATCH in-store fashion shows

EXPERIENCE home decor scenes
along Fillmore Street

ENTER to win raffle prizes of gift
certificates from local merchants

PICK UP your wristband and program
at ZINC Details, 1905 Fillmore

Suggested donation to participate
in raffle, wine and food samplings:
\$20. Proceeds benefit Jewish Family
and Children's Services.



www.FillmoreStreetSF.com

Sponsored by the Fillmore Merchants Association

ARTS Antique Rug & Textile Show
October 12 - 17

MOTEL CAPRI
2015 Greenwich St (at Buchanan)

OPENING | Tuesday, October 12 at 6 pm
FREE APPRAISALS | Wednesday, October 13, 5 - 7pm

Over 40 International Dealers
Ethnographic Fashion & Adornment Room
Prices for Every Budget

VISIT ARTAA.ORG FOR MORE INFORMATION

St. Jude Shrine Celebrating Its 75th Anniversary

In troubled times, business is booming for 'saint of desperate cases'

By STEDMAN F. MATTHEW

MORE THAN 60,000 people visit the St. Jude Shrine at St. Dominic's Church every year to light a candle, pray and seek solace or relief from their suffering.

The shrine was founded by the Dominican friars in 1935 in the middle of the Great Depression to bring hope to a world that desperately needed it. As the 75th anniversary of the shrine arrives this month on October 28, its mission continues unchanged — and gains new potency — as we find ourselves once again in the midst of a financial crisis.

Two years ago I joined the Shrine of St. Jude Thaddeus as chief administrative officer after 13 years as parish administrator of St. Dominic's. In these two years, I have been impressed by the intensity of devotion people feel for St. Jude. For them, he truly is "the saint for desperate and difficult cases" and "the saint of the impossible."

And there has been a resurgence of devotion as the economy has cratered over



Visitors pray and light candles at the St. Jude Shrine inside St. Dominic's Church.

the last couple of years. Judging by the tone and content of letters we receive — and the growth in the number of pilgrims who visit the shrine — the increased intensity reflects the desperation caused by loss of homes, jobs and general dislocation.

Unfortunately, the rise in devotion to St. Jude has led some to liken it to a cult. Some even associate him with Mexico's cultish Saint of Death, which has of late seen a surge in popularity. *The New York Times* recently posted a video on its website, "Streetwise Saint Joins Mexico Drug War," in which it describes how thousands of Mexico City gang youth have begun

making monthly pilgrimages carrying candles, rosaries and effigies of St. Jude as the unofficial local patron saint of addicts.

Unfortunately, public confusion over this and other reports has spawned disquieting phone calls and letters to us from true devotees of St. Jude who are upset that the local shrine might be somehow associated with narco-gangs — however far-fetched the connection — or that faithful Catholics are regarded in some quarters as cultists.

In fact, we remain what we have always been: a ministry of hope in a world woefully in need of it.

There are shrines to St. Jude in New

York, Baltimore, Chicago, New Orleans and other places around the world. The story is told with brio in the book *Jude: A Pilgrimage to the Saint of Last Resort*, by the television journalist Liz Trotta, who will come from New York this month to participate in our 75th anniversary celebration. On October 27 at 7:30 p.m. at St. Dominic's, she will give a lecture on her pilgrimage through Turkey following the trail of Jude.

The theme of the 75th anniversary will be pilgrimage — the age-old devotional exercise that has gained new currency in our time. Last April, Father Martin Walsh, director of the shrine, made a pilgrimage to Santiago de Compostela, Spain, the place where St. James is buried, walking the 700 miles from southern France to northern Spain. He will give two talks about his experiences at St. Dominic's, one in English on October 15 at 7:30 p.m.; another in Spanish on October 17 at 3 p.m. For more information, go to stjude-shrine.org.

St. Dominic's Shrine of St. Jude sponsors an annual pilgrimage that draws thousands of people from across California and parts of Central and South America. They walk for miles through the streets of San Francisco to the Shrine of St. Jude, for mass and a celebration. This year's pilgrimage of approximately seven miles will be on Saturday, October 23. It starts at St. Finn Barr's Church at 415 Edna Street in San Francisco.

San Francisco archbishop George Niederauer, joined by other bishops and clergy from the Bay Area, will bring the celebration to a close by presiding at a special mass at St. Dominic's on October 28 at 5:30 p.m.

By MARILYN STRAKA

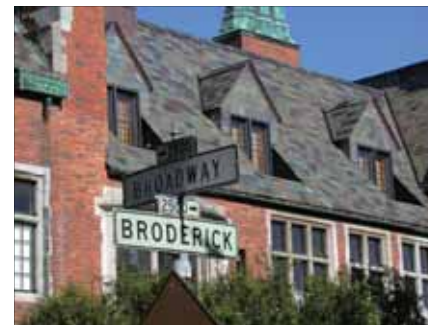
The tour begins at the corner of Pacific and Broderick Streets in front of the Hotel Drisco.

2901 Pacific. The Hotel Drisco was built in 1903. President Eisenhower liked the hotel, and one of the suites where he stayed is named the Eisenhower Suite. In years past, the Gettys and other neighborhood families used the hotel for overflow guests or black sheep relatives. Today the hotel has been beautifully restored at a cost of \$6 million. It has 43 rooms, 19 of which are suites with a view of either the bay or the city skyline.

Walk east on Pacific.

2889 Pacific. This home is distinctive because of the arched transom over the entryway. Built in 1890, it was the first in the area to use this Baroque device. It was originally the home of Ernest Folger, who made his fortune in the coffee business.

2849 Pacific. This home was built in 1910 by Joseph Peltier, a conductor on the streetcar line that ran by here. He often took local residents downtown to the Palace Hotel and then retrieved them late in the evening, stopping the car to let them out in front of their homes. Peltier became wealthy based on a tip from one of his passengers about a real estate investment in Nevada. He patterned the interior of his house after the Palace Hotel: beaded chandeliers, crystal door knobs, wood paneling, silk covered walls — even baths with faucet controls outside the room.



next door were designed in 1933 by an associate of Willis Polk. From 1974 to 1994, it was the Canadian Consulate.

Broadway and Divisadero. Note the remarkable view of the downtown skyline visible from this corner. You can see both the Transamerica Pyramid and the dark carnelian granite Bank of America building, the two tallest structures in the city.

Turn left on Broadway.

A hidden crooked street. At Broderick, a serpentine driveway plunges down the hill toward the bay. This "street" is actually a private driveway serving 2800 and 2808 Broadway. Although Lombard Street between Hyde and Leavenworth is the city's best known crooked street, there are actually several in San Francisco. Vermont Street between 20th and 22nd has more turns for its length than Lombard. And nearby is another crooked street, on Octavia between Jackson and Washington beside the Spreckels Mansion, now novelist Danielle Steel's home.

2800 and 2808 Broadway (pictured above and on the front page). These two English Tudor houses with Gothic-arched windows and entryways are twin homes. They were designed by Willis Polk's firm and built together in 1927 by the widow of I.W. Hellman Jr. for her and her daughter and son-in-law. The homes were renovated in 1980 and sold for \$2 million. Today, they are valued at far more and are owned by the Haas family.

TO PAGE 10 ►

Rooms With a View

A local leads a tour at the top of Pacific Heights

2820 Pacific. Set well back from the street, this house was designed by celebrated architect Willis Polk and occupied for more than 40 years by Alice Griffith, a wealthy San Franciscan who was served by at least four servants at all times: a houseman to do the laundry and tend the fires, a cook to prepare meals and do the marketing and two maids who cleaned upstairs.

2800 Pacific. This classic Georgian revival mansion uses brickwork

throughout as trim, retaining walls, walkways and steps. Notice the initials set in the sidewalk by the front entryway and in the beveled-glass front door. The "G" stands for Gruen, the owner, who married a Herbst. The penthouse is a recent addition.

Turn left on Divisadero.

2500 Divisadero. This lot has had several homes on it since 1889. The current home and the matching home

Archbishop Riordan High School

OPEN HOUSE

Come get in tune with us!

Sunday, October 31, 2010
Program Begins at 10:00 a.m.

Learn About:

- Vision and Mission
- College Preparatory Academics
- Athletic Programs
- Extra-Curricular Activities

Talk to Faculty • Tour Campus

New!
state-of-the-art weight room

Lindland Theatre
175 Phelan Avenue
San Francisco, CA 94112
415-586-1266
www.riordanhhs.org

Brotherhood Begins Here!

Discover.
Connect.
Take Action.

COMING OF
Age
BAY AREA

What's next
in your life?

Get inspired, find your passion,
and chart your path to a
fulfilled future through *Coming
of Age* programs, workshops &
volunteer opportunities!

NEW! "Explore Your Future"
workshops begin **October 28**
in San Francisco. Visit
www.ComingOfAge.org/BayArea
or call (888) 308-1767 for more info.

Capturing the Talent,
Energy & Expertise of People 50+

From our town to yours...

**Marin Horizon School now
has bus service!**

Marin Horizon School is a non-profit organization serving students in Marin County, California. We are currently accepting students for the 2011-2012 school year. For more information, please contact us at 415-993-8436 or visit our website at www.marinhorizon.org.

Take the day off.

YOUR MONEY'S STILL WORKING.

From October 1st to 30th,
Deposit \$1,000-\$50,000 into our promotional certificate

| | |
|--|---|
| 0.90% APY* 8-month Certificate | 1.30% APY* 18-month Certificate |
|--|---|

Open Your Certificate Today!

Call us at (415) 775-5377, option 4, visit www.SanFranciscoFCU.com or
stop by one of our three branches (we're open Saturdays, too!)

770 Golden Gate Ave. at Gough St.
2645 Ocean Ave. at 19th Ave.
4375 Geary Blvd. at 8th Ave.

**SAN FRANCISCO
FEDERAL CREDIT UNION***

We've served the San Francisco community since 1954. If you live,
work, worship or attend school in San Francisco, we can serve you.
And rest assured—your savings are safe and secure with us.**

*APY is the Annual Percentage Yield. **FDIC. Member FDIC. Equal Housing Lender. Member NCUA. Member SBA. Member U.S. Department of Housing and Urban Development. Member U.S. Department of Agriculture. Member U.S. Department of Education. Member U.S. Department of Health and Human Services. Member U.S. Department of Justice. Member U.S. Department of Labor. Member U.S. Department of State. Member U.S. Department of Treasury. Member U.S. Department of Veterans Affairs. Member U.S. Department of War. Member U.S. Department of Defense. Member U.S. Department of Energy. Member U.S. Department of Health and Human Services. Member U.S. Department of Justice. Member U.S. Department of Labor. Member U.S. Department of State. Member U.S. Department of Treasury. Member U.S. Department of Veterans Affairs. Member U.S. Department of War. Member U.S. Department of Defense. Member U.S. Department of Energy. Member U.S. Department of Health and Human Services. Member U.S. Department of Justice. Member U.S. Department of Labor. Member U.S. Department of State. Member U.S. Department of Treasury. Member U.S. Department of Veterans Affairs. Member U.S. Department of War. Member U.S. Department of Defense. Member U.S. Department of Energy. Member U.S. Department of Health and Human Services. Member U.S. Department of Justice. Member U.S. Department of Labor. Member U.S. Department of State. Member U.S. Department of Treasury. Member U.S. Department of Veterans Affairs. Member U.S. Department of War. Member U.S. Department of Defense. Member U.S. Department of Energy. Member U.S. Department of Health and Human Services. Member U.S. Department of Justice. Member U.S. Department of Labor. Member U.S. Department of State. Member U.S. Department of Treasury. Member U.S. Department of Veterans Affairs. Member U.S. Department of War. Member U.S. Department of Defense. Member U.S. Department of Energy. Member U.S. Department of Health and Human Services. Member U.S. Department of Justice. Member U.S. Department of Labor. Member U.S. Department of State. Member U.S. Department of Treasury. Member U.S. Department of Veterans Affairs. Member U.S. Department of War. Member U.S. Department of Defense. Member U.S. Department of Energy. Member U.S. Department of Health and Human Services. Member U.S. Department of Justice. Member U.S. Department of Labor. Member U.S. Department of State. Member U.S. Department of Treasury. Member U.S. Department of Veterans Affairs. Member U.S. Department of War. Member U.S. Department of Defense. Member U.S. Department of Energy. Member U.S. Department of Health and Human Services. Member U.S. Department of Justice. Member U.S. Department of Labor. Member U.S. Department of State. Member U.S. Department of Treasury. Member U.S. Department of Veterans Affairs. Member U.S. Department of War. Member U.S. Department of Defense. Member U.S. Department of Energy. Member U.S. Department of Health and Human Services. Member U.S. Department of Justice. Member U.S. Department of Labor. Member U.S. Department of State. Member U.S. Department of Treasury. Member U.S. Department of Veterans Affairs. Member U.S. Department of War. Member U.S. Department of Defense. Member U.S. Department of Energy. Member U.S. Department of Health and Human Services. Member U.S. Department of Justice. Member U.S. Department of Labor. Member U.S. Department of State. Member U.S. Department of Treasury. Member U.S. Department of Veterans Affairs. Member U.S. Department of War. Member U.S. Department of Defense. Member U.S. Department of Energy. Member U.S. Department of Health and Human Services. Member U.S. Department of Justice. Member U.S. Department of Labor. Member U.S. Department of State. Member U.S. Department of Treasury. Member U.S. Department of Veterans Affairs. Member U.S. Department of War. Member U.S. Department of Defense. Member U.S. Department of Energy. Member U.S. Department of Health and Human Services. Member U.S. Department of Justice. Member U.S. Department of Labor. Member U.S. Department of State. Member U.S. Department of Treasury. Member U.S. Department of Veterans Affairs. Member U.S. Department of War. Member U.S. Department of Defense. Member U.S. Department of Energy. Member U.S. Department of Health and Human Services. Member U.S. Department of Justice. Member U.S. Department of Labor. Member U.S. Department of State. Member U.S. Department of Treasury. Member U.S. Department of Veterans Affairs. Member U.S. Department of War. Member U.S. Department of Defense. Member U.S. Department of Energy. Member U.S. Department of Health and Human Services. Member U.S. Department of Justice. Member U.S. Department of Labor. Member U.S. Department of State. Member U.S. Department of Treasury. Member U.S. Department of Veterans Affairs. Member U.S. Department of War. Member U.S. Department of Defense. Member U.S. Department of Energy. Member U.S. Department of Health and Human Services. Member U.S. Department of Justice. Member U.S. Department of Labor. Member U.S. Department of State. Member U.S. Department of Treasury. Member U.S. Department of Veterans Affairs. Member U.S. Department of War. Member U.S. Department of Defense. Member U.S. Department of Energy. Member U.S. Department of Health and Human Services. Member U.S. Department of Justice. Member U.S. Department of Labor. Member U.S. Department of State. Member U.S. Department of Treasury. Member U.S. Department of Veterans Affairs. Member U.S. Department of War. Member U.S. Department of Defense. Member U.S. Department of Energy. Member U.S. Department of Health and Human Services. Member U.S. Department of Justice. Member U.S. Department of Labor. Member U.S. Department of State. Member U.S. Department of Treasury. Member U.S. Department of Veterans Affairs. Member U.S. Department of War. Member U.S. Department of Defense. Member U.S. Department of Energy. Member U.S. Department of Health and Human Services. Member U.S. Department of Justice. Member U.S. Department of Labor. Member U.S. Department of State. Member U.S. Department of Treasury. Member U.S. Department of Veterans Affairs. Member U.S. Department of War. Member U.S. Department of Defense. Member U.S. Department of Energy. Member U.S. Department of Health and Human Services. Member U.S. Department of Justice. Member U.S. Department of Labor. Member U.S. Department of State. Member U.S. Department of Treasury. Member U.S. Department of Veterans Affairs. Member U.S. Department of War. Member U.S. Department of Defense. Member U.S. Department of Energy. Member U.S. Department of Health and Human Services. Member U.S. Department of Justice. Member U.S. Department of Labor. Member U.S. Department of State. Member U.S. Department of Treasury. Member U.S. Department of Veterans Affairs. Member U.S. Department of War. Member U.S. Department of Defense. Member U.S. Department of Energy. Member U.S. Department of Health and Human Services. Member U.S. Department of Justice. Member U.S. Department of Labor. Member U.S. Department of State. Member U.S. Department of Treasury. Member U.S. Department of Veterans Affairs. Member U.S. Department of War. Member U.S. Department of Defense. Member U.S. Department of Energy. Member U.S. Department of Health and Human Services. Member U.S. Department of Justice. Member U.S. Department of Labor. Member U.S. Department of State. Member U.S. Department of Treasury. Member U.S. Department of Veterans Affairs. Member U.S. Department of War. Member U.S. Department of Defense. Member U.S. Department of Energy. Member U.S. Department of Health and Human Services. Member U.S. Department of Justice. Member U.S. Department of Labor. Member U.S. Department of State. Member U.S. Department of Treasury. Member U.S. Department of Veterans Affairs. Member U.S. Department of War. Member U.S. Department of Defense. Member U.S. Department of Energy. Member U.S. Department of Health and Human Services. Member U.S. Department of Justice. Member U.S. Department of Labor. Member U.S. Department of State. Member U.S. Department of Treasury. Member U.S. Department of Veterans Affairs. Member U.S. Department of War. Member U.S. Department of Defense. Member U.S. Department of Energy. Member U.S. Department of Health and Human Services. Member U.S. Department of Justice. Member U.S. Department of Labor. Member U.S. Department of State. Member U.S. Department of Treasury. Member U.S. Department of Veterans Affairs. Member U.S. Department of War. Member U.S. Department of Defense. Member U.S. Department of Energy. Member U.S. Department of Health and Human Services. Member U.S. Department of Justice. Member U.S. Department of Labor. Member U.S. Department of State. Member U.S. Department of Treasury. Member U.S. Department of Veterans Affairs. Member U.S. Department of War. Member U.S. Department of Defense. Member U.S. Department of Energy. Member U.S. Department of Health and Human Services. Member U.S. Department of Justice. Member U.S. Department of Labor. Member U.S. Department of State. Member U.S. Department of Treasury. Member U.S. Department of Veterans Affairs. Member U.S. Department of War. Member U.S. Department of Defense. Member U.S. Department of Energy. Member U.S. Department of Health and Human Services. Member U.S. Department of Justice. Member U.S. Department of Labor. Member U.S. Department of State. Member U.S. Department of Treasury. Member U.S. Department of Veterans Affairs. Member U.S. Department of War. Member U.S. Department of Defense. Member U.S. Department of Energy. Member U.S. Department of Health and Human Services. Member U.S. Department of Justice. Member U.S. Department of Labor. Member U.S. Department of State. Member U.S. Department of Treasury. Member U.S. Department of Veterans Affairs. Member U.S. Department of War. Member U.S. Department of Defense. Member U.S. Department of Energy. Member U.S. Department of Health and Human Services. Member U.S. Department of Justice. Member U.S. Department of Labor. Member U.S. Department of State. Member U.S. Department of Treasury. Member U.S. Department of Veterans Affairs. Member U.S. Department of War. Member U.S. Department of Defense. Member U.S. Department of Energy. Member U.S. Department of Health and Human Services. Member U.S. Department of Justice. Member U.S. Department of Labor. Member U.S. Department of State. Member U.S. Department of Treasury. Member U.S. Department of Veterans Affairs. Member U.S. Department of War. Member U.S. Department of Defense. Member U.S. Department of Energy. Member U.S. Department of Health and Human Services. Member U.S. Department of Justice. Member U.S. Department of Labor. Member U.S. Department of State. Member U.S. Department of Treasury. Member U.S. Department of Veterans Affairs. Member U.S. Department of War. Member U.S. Department of Defense. Member U.S. Department of Energy. Member U.S. Department of Health and Human Services. Member U.S. Department of Justice. Member U.S. Department of Labor. Member U.S. Department of State. Member U.S. Department of Treasury. Member U.S. Department of Veterans Affairs. Member U.S. Department of War. Member U.S. Department of Defense. Member U.S. Department of Energy. Member U.S. Department of Health and Human Services. Member U.S. Department of Justice. Member U.S. Department of Labor. Member U.S. Department of State. Member U.S. Department of Treasury. Member U.S. Department of Veterans Affairs. Member U.S. Department of War. Member U.S. Department of Defense. Member U.S. Department of Energy. Member U.S. Department of Health and Human Services. Member U.S. Department of Justice. Member U.S. Department of Labor. Member U.S. Department of State. Member U.S. Department of Treasury. Member U.S. Department of Veterans Affairs. Member U.S. Department of War. Member U.S. Department of Defense. Member U.S. Department of Energy. Member U.S. Department of Health and Human Services. Member U.S. Department of Justice. Member U.S. Department of Labor. Member U.S. Department of State. Member U.S. Department of Treasury. Member U.S. Department of Veterans Affairs. Member U.S. Department of War. Member U.S. Department of Defense. Member U.S. Department of Energy. Member U.S. Department of Health and Human Services. Member U.S. Department of Justice. Member U.S. Department of Labor. Member U.S. Department of State. Member U.S. Department of Treasury. Member U.S. Department of Veterans Affairs. Member U.S. Department of War. Member U.S. Department of Defense. Member U.S. Department of Energy. Member U.S. Department of Health and Human Services. Member U.S. Department of Justice. Member U.S. Department of Labor. Member U.S. Department of State. Member U.S. Department of Treasury. Member U.S. Department of Veterans Affairs. Member U.S. Department of War. Member U.S. Department of Defense. Member U.S. Department of Energy. Member U.S. Department of Health and Human Services. Member U.S. Department of Justice. Member U.S. Department of Labor. Member U.S. Department of State. Member U.S. Department of Treasury. Member U.S. Department of Veterans Affairs. Member U.S. Department of War. Member U.S. Department of Defense. Member U.S. Department of Energy. Member U.S. Department of Health and Human Services. Member U.S. Department of Justice. Member U.S. Department of Labor. Member U.S. Department of State. Member U.S. Department of Treasury. Member U.S. Department of Veterans Affairs. Member U.S. Department of War. Member U.S. Department of Defense. Member U.S. Department of Energy. Member U.S. Department of Health and Human Services. Member U.S. Department of Justice. Member U.S. Department of Labor. Member U.S. Department of State. Member U.S. Department of Treasury. Member U.S. Department of Veterans Affairs. Member U.S. Department of War. Member U.S. Department of Defense. Member U.S. Department of Energy. Member U.S. Department of Health and Human Services. Member U.S. Department of Justice. Member U.S. Department of Labor. Member U.S. Department of State. Member U.S. Department of Treasury. Member U.S. Department of Veterans Affairs. Member U.S. Department of War. Member U.S. Department of Defense. Member U.S. Department of Energy. Member U.S. Department of Health and Human Services. Member U.S. Department of Justice. Member U.S. Department of Labor. Member U.S. Department of State. Member U.S. Department of Treasury. Member U.S. Department of Veterans Affairs. Member U.S. Department of War. Member U.S. Department of Defense. Member U.S. Department of Energy. Member U.S. Department of Health and Human Services. Member U.S. Department of Justice. Member U.S. Department of Labor. Member U.S. Department of State. Member U.S. Department of Treasury. Member U.S. Department of Veterans Affairs. Member U.S. Department of War. Member U.S. Department of Defense. Member U.S. Department of Energy. Member U.S. Department of Health and Human Services. Member U.S. Department of Justice. Member U.S. Department of Labor. Member U.S. Department of State. Member U.S. Department of Treasury. Member U.S. Department of Veterans Affairs. Member U.S. Department of War. Member U.S. Department of Defense. Member U.S. Department of Energy. Member U.S. Department of Health and Human Services. Member U.S. Department of Justice. Member U.S. Department of Labor. Member U.S. Department of State. Member U.S. Department of Treasury. Member U.S. Department of Veterans Affairs. Member U.S. Department of War. Member U.S. Department of Defense. Member U.S. Department of Energy. Member U.S. Department of Health and Human Services. Member U.S. Department of Justice. Member U.S. Department of Labor. Member U.S. Department of State. Member U.S. Department of Treasury. Member U.S. Department of Veterans Affairs. Member U.S. Department of War. Member U.S. Department of Defense. Member U.S. Department of Energy. Member U.S. Department of Health and Human Services. Member U.S. Department of Justice. Member U.S. Department of Labor. Member U.S. Department of State. Member U.S. Department of Treasury. Member U.S. Department of Veterans Affairs. Member U.S. Department of War. Member U.S. Department of Defense. Member U.S. Department of Energy. Member U.S. Department of Health and Human Services. Member U.S. Department of Justice. Member U.S. Department of Labor. Member U.S. Department of State. Member U.S. Department of Treasury. Member U.S. Department of Veterans Affairs. Member U.S. Department of War. Member U.S. Department of Defense. Member U.S. Department of Energy. Member U.S. Department of Health and Human Services. Member U.S. Department of Justice. Member U.S. Department of Labor. Member U.S. Department of State. Member U.S. Department of Treasury. Member U.S. Department of Veterans Affairs. Member U.S. Department of War. Member U.S. Department of Defense. Member U.S. Department of Energy. Member U.S. Department of Health and Human Services. Member U.S. Department of Justice. Member U.S. Department of Labor. Member U.S. Department of State. Member U.S. Department of Treasury. Member U.S. Department of Veterans Affairs. Member U.S. Department of War. Member U.S. Department of Defense. Member U.S. Department of Energy. Member U.S. Department of Health and Human Services. Member U.S. Department of Justice. Member U.S. Department of Labor. Member U.S. Department of State. Member U.S. Department of Treasury. Member U.S. Department of Veterans Affairs. Member U.S. Department of War. Member U.S. Department of Defense. Member U.S. Department of Energy. Member U.S. Department of Health and Human Services. Member U.S. Department of Justice. Member U.S. Department of Labor. Member U.S. Department of State. Member U.S. Department of Treasury. Member U.S. Department of Veterans Affairs. Member U.S. Department of War. Member U.S. Department of Defense. Member U.S. Department of Energy. Member U.S. Department of Health and Human Services. Member U.S. Department of Justice. Member U.S. Department of Labor. Member U.S. Department of State. Member U.S. Department of Treasury. Member U.S. Department of Veterans Affairs. Member U.S. Department of War. Member U.S. Department of Defense. Member U.S. Department of Energy. Member U.S. Department of Health and Human Services. Member U.S. Department of Justice. Member U.S. Department of Labor. Member U.S. Department of State. Member U.S. Department of Treasury. Member U.S. Department of Veterans Affairs. Member U.S. Department of War. Member U.S. Department of Defense. Member U.S. Department of Energy. Member U.S. Department of Health and Human Services. Member U.S. Department of Justice. Member U.S. Department of Labor. Member U.S. Department of State. Member U.S. Department of Treasury. Member U.S. Department of Veterans Affairs. Member U.S. Department of War. Member U.S. Department of Defense. Member U.S. Department of Energy. Member U.S. Department of Health and Human Services. Member U.S. Department of Justice. Member U.S. Department of Labor. Member U.S. Department of State. Member U.S. Department of Treasury. Member U.S. Department of Veterans Affairs. Member U.S. Department of War. Member U.S. Department of Defense. Member U.S. Department of Energy. Member U.S. Department of Health and Human Services. Member U.S. Department of Justice. Member U.S. Department of Labor. Member U.S. Department of State. Member U.S. Department of Treasury. Member U.S. Department of Veterans Affairs. Member U.S. Department of War. Member U.S. Department of Defense. Member U.S. Department of Energy. Member U.S. Department of Health and Human Services. Member U.S. Department of Justice. Member U.S. Department of Labor. Member U.S. Department of State. Member U.S. Department of Treasury. Member U.S. Department of Veterans Affairs. Member U.S. Department of War. Member U.S. Department of Defense. Member U.S. Department of Energy. Member U.S. Department of Health and Human Services. Member U.S. Department of Justice. Member U.S. Department of Labor. Member U.S. Department of State. Member U.S. Department of Treasury. Member U.S. Department of Veterans Affairs. Member U.S. Department of War. Member U.S. Department of Defense. Member U.S. Department of Energy. Member U.S. Department of Health and Human Services. Member U.S. Department of Justice. Member U.S. Department of Labor. Member U.S. Department of State. Member U.S. Department of Treasury. Member U.S. Department of Veterans Affairs. Member U.S. Department of War. Member U.S. Department of Defense. Member U.S. Department of Energy. Member U.S. Department of Health and Human Services. Member U.S. Department of Justice. Member U.S. Department of Labor. Member U.S. Department of State. Member U.S. Department of Treasury. Member U.S. Department of Veterans Affairs. Member U.S. Department of War. Member U.S. Department of Defense. Member U.S. Department of Energy. Member U.S. Department of Health and Human Services. Member U.S. Department of Justice. Member U.S. Department of Labor. Member U.S. Department of State. Member U.S. Department of Treasury. Member U.S. Department of Veterans Affairs. Member U.S. Department of War. Member U.S. Department of Defense. Member U.S. Department of Energy. Member U.S. Department of Health and Human Services. Member U.S. Department of Justice. Member U.S. Department of Labor. Member U.S. Department of State. Member U.S. Department of Treasury. Member U.S. Department of Veterans Affairs. Member U.S. Department of War. Member U.S. Department of Defense. Member U.S. Department of Energy. Member U.S. Department of Health and Human Services. Member U.S. Department of Justice. Member U.S. Department of Labor. Member U.S. Department of State. Member U.S. Department of Treasury. Member U.S. Department of Veterans Affairs. Member U.S. Department of War. Member U.S. Department of Defense. Member U.S. Department of Energy. Member U.S. Department of Health and Human Services. Member U.S. Department of Justice. Member U.S. Department of Labor. Member U.S. Department of State. Member U.S. Department of Treasury. Member U.S. Department of Veterans Affairs. Member U.S. Department of War. Member U.S. Department of Defense. Member U.S. Department of Energy. Member U.S. Department of Health and Human Services. Member U.S. Department of Justice. Member U.S. Department of Labor. Member U.S. Department of State. Member U.S. Department of Treasury. Member U.S. Department of Veterans Affairs. Member U.S. Department of War. Member U.S. Department of Defense. Member U.S. Department of Energy. Member U.S. Department of Health and Human Services. Member U.S. Department of Justice. Member U.S. Department of Labor. Member U.S. Department of State. Member U.S. Department of Treasury. Member U.S. Department of Veterans Affairs. Member U.S. Department of War. Member U.S. Department of Defense. Member U.S. Department of Energy. Member U.S. Department of Health and Human Services. Member U.S. Department of Justice. Member U.S. Department of Labor. Member U.S. Department of State. Member U.S. Department of Treasury. Member U.S. Department of Veterans Affairs. Member U.S. Department of War. Member U.S. Department of Defense. Member U.S. Department of Energy. Member U.S. Department of Health and Human Services. Member U.S. Department of Justice. Member U.S. Department of Labor. Member U.S. Department of State. Member U.S. Department of Treasury. Member U.S. Department of Veterans Affairs. Member U.S. Department of War. Member U.S. Department of Defense. Member U.S. Department of Energy. Member U.S. Department of Health and Human Services. Member U.S. Department of Justice. Member U.S. Department of Labor. Member U.S. Department of State. Member U.S. Department of Treasury. Member U.S. Department of Veterans Affairs. Member U.S. Department of War. Member U.S. Department of Defense. Member U.S. Department of Energy. Member U.S. Department of Health and Human Services. Member U.S. Department of Justice. Member U.S. Department of Labor. Member U.S. Department of State. Member U.S. Department of Treasury. Member U.S. Department of Veterans Affairs. Member U.S. Department of War. Member U.S. Department of Defense. Member U.S. Department of Energy. Member U.S. Department of Health and Human Services. Member U.S. Department of Justice. Member U.S. Department of Labor. Member U.S. Department of State. Member U.S. Department of Treasury. Member U.S. Department of Veterans Affairs. Member U.S. Department of War. Member U.S. Department of Defense. Member U.S. Department of Energy. Member U.S. Department of Health and Human Services. Member U.S. Department of Justice. Member U.S. Department of Labor. Member U.S. Department of State. Member U.S. Department of Treasury. Member U.S. Department of Veterans Affairs. Member U.S. Department of War. Member U.S. Department of Defense. Member U.S. Department of Energy. Member U.S. Department of Health and Human Services. Member U.S. Department of Justice. Member U.S. Department of Labor. Member U.S. Department of State. Member U.S. Department of Treasury. Member U.S. Department of Veterans Affairs. Member U.S. Department of War. Member U.S. Department of Defense. Member U.S. Department of Energy. Member U.S. Department of Health and Human Services. Member U.S. Department of Justice. Member U.S. Department of Labor. Member U.S. Department of State. Member U.S. Department of Treasury. Member U.S. Department of Veterans Affairs. Member U.S. Department of War. Member U.S. Department of Defense. Member U.S. Department of Energy. Member U.S. Department of Health and Human Services. Member U.S. Department of Justice. Member U.S. Department of Labor. Member U.S. Department of State. Member U.S. Department of Treasury. Member U.S. Department of Veterans Affairs. Member U.S. Department of War. Member U.S. Department of Defense. Member U.S. Department of Energy. Member U.S. Department of Health and Human Services. Member U.S. Department of Justice. Member U.S. Department of Labor. Member U.S. Department of State. Member U.S. Department of Treasury. Member U.S. Department of Veterans Affairs. Member U.S. Department of War. Member U.S. Department of Defense. Member U.S. Department of Energy. Member U.S. Department of Health and Human Services. Member U.S. Department of Justice. Member U.S. Department of Labor. Member U.S. Department of State. Member U.S. Department of Treasury. Member U.S. Department of Veterans Affairs. Member U.S. Department of War. Member U.S. Department of Defense. Member U.S. Department of Energy. Member U.S. Department of Health and Human Services. Member U.S. Department of Justice. Member U.S. Department of Labor. Member U.S. Department of State. Member U.S. Department of Treasury. Member U.S. Department of Veterans Affairs. Member U.S. Department of War. Member U.S. Department of Defense. Member U.S. Department of Energy. Member U.S. Department of Health and Human Services. Member U.S. Department of Justice. Member U.S. Department of Labor. Member U.S. Department of State. Member U.S. Department of Treasury. Member U.S. Department of Veterans Affairs. Member U.S. Department of War. Member U.S. Department of Defense. Member U.S. Department of Energy. Member U.S. Department of Health and Human Services. Member U.S. Department of Justice. Member U.S. Department of Labor. Member U.S. Department of State. Member U.S. Department of Treasury. Member U.S. Department of Veterans Affairs. Member U.S. Department of War. Member U.S. Department of Defense. Member U.S. Department of Energy. Member U.S. Department of Health and Human Services. Member U.S. Department of Justice. Member U.S. Department of Labor. Member U.S. Department of State. Member U.S. Department of Treasury. Member U.S. Department of Veterans Affairs. Member U.S. Department of War. Member U.S. Department of Defense. Member U.S. Department of Energy. Member U.S. Department of Health and Human Services. Member U.S. Department of Justice. Member U.S. Department of Labor. Member U.S. Department of State. Member U.S. Department of Treasury. Member U.S. Department of Veterans Affairs. Member U.S. Department of War. Member U.S. Department of Defense. Member U.S. Department of Energy. Member U.S. Department of Health and Human Services. Member U.S. Department of Justice. Member U.S. Department of Labor. Member U.S. Department of State. Member U.S. Department of Treasury. Member U.S. Department of Veterans Affairs. Member U.S. Department of War. Member U.S. Department of Defense. Member U.S. Department of Energy. Member U.S. Department of Health and Human Services. Member U.S. Department of Justice. Member U.S. Department of Labor. Member U.S. Department of State. Member U.S. Department of Treasury. Member U.S. Department of Veterans Affairs. Member U.S. Department of War. Member U.S. Department of Defense. Member U.S. Department of Energy. Member U.S. Department of Health and Human Services. Member U.S. Department of Justice. Member U.S. Department of Labor. Member U.S. Department of State. Member U.S. Department of Treasury. Member U.S. Department of Veterans Affairs. Member U.S. Department of War. Member U.S. Department of Defense. Member U.S. Department of Energy. Member U.S. Department of Health and Human Services. Member U.S. Department of Justice. Member U.S. Department of Labor. Member U.S. Department of State. Member U.S. Department of Treasury. Member U.S. Department of Veterans Affairs. Member U.S. Department of War. Member U.S. Department of Defense. Member U.S. Department of Energy. Member U.S. Department of Health and Human Services. Member U.S. Department of Justice. Member U.S. Department of Labor. Member U.S. Department of State. Member U.S. Department of Treasury. Member U.S. Department of Veterans Affairs. Member U.S. Department of War. Member U.S. Department of Defense. Member U.S. Department of Energy. Member U.S. Department of Health and Human Services. Member U.S. Department of Justice. Member U.S. Department of Labor. Member U.S. Department of State. Member U.S. Department of Treasury. Member U.S. Department of Veterans Affairs. Member U.S. Department of War. Member U.S. Department of Defense. Member U.S. Department of Energy. Member U.S. Department of Health and Human Services. Member U.S. Department of Justice. Member U.S. Department of Labor. Member U.S. Department of State. Member U.S. Department of Treasury. Member U.S. Department of Veterans Affairs. Member U.S. Department of War. Member U.S. Department of Defense. Member U.S. Department of Energy. Member U.S. Department of Health and Human Services. Member U.S. Department of Justice. Member U.S. Department of Labor. Member U.S. Department of State. Member U.S. Department of Treasury. Member U.S. Department of Veterans Affairs. Member U.S. Department of War. Member U.S. Department of Defense. Member U.S. Department of Energy. Member U.S. Department of Health and Human Services. Member U.S. Department of Justice. Member U.S. Department of Labor. Member U.S. Department of State. Member U.S. Department of Treasury. Member U.S. Department of Veterans Affairs. Member U.S. Department of War. Member U.S. Department of Defense. Member U.S. Department of Energy. Member U.S. Department of Health and Human Services. Member U.S. Department of Justice. Member U.S. Department of Labor. Member U.S. Department of State. Member U.S. Department of Treasury. Member U.S. Department of Veterans Affairs. Member U.S. Department of War. Member U.S. Department of Defense. Member U.S. Department of Energy. Member U.S. Department of Health and Human Services. Member U.S. Department of Justice. Member U.S. Department of Labor. Member U.S. Department of State. Member U.S. Department of Treasury. Member U.S. Department of Veterans Affairs. Member U.S. Department of War. Member U.S. Department of Defense. Member U.S. Department of Energy. Member U.S. Department of Health and Human Services. Member U.S. Department of Justice. Member U.S. Department of Labor. Member U.S. Department of State. Member U.S. Department of Treasury. Member U.S. Department of Veterans Affairs. Member U.S. Department of War. Member U.S. Department of Defense. Member U.S. Department of Energy. Member U.S. Department of Health and Human Services. Member U.S. Department of Justice. Member U.S. Department of Labor. Member U.S. Department of State. Member U.S. Department of Treasury. Member U.S. Department of Veterans Affairs. Member U.S. Department of War. Member U.S. Department of Defense. Member U.S. Department of Energy. Member U.S. Department of Health and Human Services. Member U.S. Department of Justice. Member U.S. Department of Labor. Member U.S. Department of State. Member U.S. Department of Treasury. Member U.S. Department of Veterans Affairs. Member U.S. Department of War. Member U.S. Department of Defense. Member U.S. Department of Energy. Member U.S. Department of Health and Human Services. Member U.S. Department of Justice. Member U.S. Department of Labor. Member U.S. Department of State. Member U.S. Department of Treasury. Member U.S. Department of Veterans Affairs. Member U.S. Department of War. Member U.S. Department of Defense. Member U.S. Department of Energy. Member U.S. Department of Health and Human Services. Member U.S. Department of Justice. Member U.S. Department of Labor. Member U.S. Department of State. Member U.S. Department of Treasury. Member U.S. Department of Veterans Affairs. Member U.S. Department of War. Member U.S. Department of Defense. Member U.S. Department of Energy. Member U.S. Department of Health and Human Services. Member U.S. Department of Justice. Member U.S. Department of Labor. Member U.S. Department of State. Member U.S. Department of Treasury. Member U.S. Department of Veterans Affairs. Member U.S. Department of War. Member U.S. Department of Defense. Member U.S. Department of Energy. Member U.S. Department of Health and Human Services. Member U.S. Department of Justice. Member U.S. Department of Labor. Member U.S. Department of State. Member U.S. Department of Treasury. Member U.S. Department of



► FROM PAGE 9

2801 Broadway (above). This Southern Colonial mansion with four Corinthian columns was designed in 1900 by Willis Polk for a real estate agent. It is dramatically approached by twin flights of curved steps behind artistic gates created by San Francisco sculptor Ruth Asawa. In 1967, this was dubbed the "House of Mystery" when a huge arsenal of weapons was found there. The mystery was never solved.

2820 Broadway. Notice the white, blue and red flag at the doorway of this brick structure marking it as the home of the Russian consul general. The Russian Consulate is a large brick building just down the hill at the corner of Green and Baker.

Look across the street.

Grant School. U.S. Grant School was built on this site in 1889. It was rebuilt in 1921 and operated as a public school until 1972, then bulldozed after it failed seismic safety exams. The lot stood empty for 25 years until 1997, when it sold at auction for \$13.5 million. Now four new homes have been built on the site, including two modern mega-homes facing Broadway that have separate guest houses in the rear facing Pacific Avenue.

2850 Broadway. This starkly modern home is unlike most of its neighbors. Originally designed by William Wurster, it was renovated a few years ago by current owner Larry Ellison, CEO of Oracle, who installed a sleek contemporary facade of steel and glass. In the rear, a wall of windows opens onto exquisite bay views. The front yard features a fountain incorporating a suspended boulder.



2898 Broadway (above). When completed in 1899, this house cost less than \$20,000. The Bliss family were the first owners. Duane Bliss came to San Francisco seeking gold but instead made his fortune in banking, lumber and railroads. He is known for building the first railroad from Truckee to Lake Tahoe and also built the Tahoe Tavern in 1901 at its terminal overlooking the lake. His son Walter designed this home and soon entered into partnership with William Faville. This association produced such architectural achievements as the St. Francis Hotel, the Geary Theater and the Flood mansion at 2222 Broadway. The three houses on the right are owned by the Gettys.

Baker Street steps. Looking down these precipitous steps, it is clear why this block couldn't be made into a street. There

are 650 stairways in San Francisco that fall into this category.

2901 Broadway (above right). Built in 1927, this neo-classical Renaissance mansion was designed by architect Henry C. Smith for industrialist Milton Ray. The foundation had to be chained to the rocks for stability. When the house was partially built, Golden Gate Bridge engineer Joseph Strauss was called in to give advice about adding another floor. He advised against the addition due to the danger of earthquakes. It is for sale for \$45 million, down from its original asking price of \$65 million.

2950 Broadway (above far right). This house was owned for 20 years by flamboyant San Francisco lawyer Melvin Belli and his politically active wife, Lia Belli. Built around 1915, the outside has



remained virtually unchanged. Inside, the formal rooms for entertaining are on the main floor, while upstairs there are three bedrooms and a guestroom. Every room has a breathtaking view of the bay or the garden. The Bellis added a swimming pool overlooking the bay at the foot of the north garden.

2960 Broadway. When it was built in 1912, this was the only home on the entire block. It was like a country home with the Presidio forest at its doorstep. Today four palm trees grace the entrance, which has been compared to an Italian villa. The architect, Willis Polk, was best known at that time as the chairman of the Architects' Commission for the Panama-Pacific International Exposition.

Lyon Street steps. These steps, dating from 1906, were designed by Louis M.

Upton. He was also the architect for the large home at the bottom of the steps at 2460 Lyon Street, today occupied by U.S. Senator Dianne Feinstein. There are 130 steps between Broadway and Vallejo. The staircase continues, narrow and steep, through a forested area to Green Street.

Presidio entrance, Broadway gate. Since 1776 a military installation, the Presidio is now a national park. Try stopping here for a few minutes. Be quiet and notice how much life you can find. Walk into the Presidio to see the replanting efforts; many of the trees planted in the 1880s by the U.S. Army are being replaced.

Turn left on Lyon for one block, then left on Pacific.

3030 Pacific. Owned by a tennis pro,



this house incorporates many green features, including the recycled plastic garage door, the wind turbine that powers the home and hydroponic plantings. Note the waterfall and oversize goldfish bowl.

3001 Pacific. This stately home, which predates the 1906 earthquake, was the Arab Republic of Egypt Consulate since 1945 — the year the United Nations was established — until it recently moved. Many of the foreign consulates in San Francisco are located in Pacific Heights, some serving as both a consular office and home to the consul general.

2950 Pacific. This house has its address on Pacific, at street level, but is more visible from Broadway. It is a Cape Cod colonial shingle house built for Edwin Newhall and his wife Virginia in 1907. The design was Mrs. Newhall's idea,

patterned after New England homes she liked. The story goes that she eagerly watched the progress of the house, closely overseeing the architect. One day the architect announced, "You don't need me anymore," abruptly left and never returned. Mr. Newhall, who was in the shipping and commerce business, enjoyed boats and made the third floor of the home like the interior of a ship's cabin. The large picture windows, seen from Broadway, are original and were unusual at the time.

Marijyn Straka has lived in Pacific Heights for 40 years. She started On The Level tours that avoid hills and steps to follow her passion of working with seniors and the disabled. Added tours now challenge those who want to experience some of San Francisco's 650 stairways. For more information, go to OnTheLevelSF.com.

1st Place
Best Place to Buy
Vitamins and food
supplements

"Best of the Bay"

VitaminExpress®
A trustworthy name since 1982

VITAMIN EXPRESS

FACE & BODY CARE
BOOKS & HEALTH

VITAMIN EXPRESS

Natural Body Care & Quality Supplements

2047 Fillmore St.
between California & Pine
(415) 922-3811 M-Sat 10-6, Sun 12-5

also: 1428 Irving Street, SF (415) 564-8160
45 Camino Alto, Mill Valley (415) 389-9671
1400 Shattuck, Berkeley (510) 841-1798

on-line order VitaminExpress.com newsletter

CALIFORNIA SHELL
AUTO SERVICE & REPAIR

Brakes & Tires
Check Engine Lights
Computer Diagnostics
Factory Scheduled Maintenance
15K, 30K, 45K, 60K & 90K Services
Cooling System & Transmission Problems
Smog Tests & Repairs for Failure
Batteries & Starting Problems
Minor Repairs of all Types

EUROPEAN • JAPANESE • AMERICAN

Fast, Friendly & Guaranteed

2501 California at Steiner • (415) 567-6152
Monday through Friday 8 a.m. to 6 p.m.

Get a free 11x14
Black and White Print
When you book a
Portrait Session
in October

Kathi O'Leary
Photography

In Studio or on Location
Families, Professionals & Events

415.359.1900

Ask us about Photo Classes &
In-Studio Parties
For Children & Adults

www.kathioleary.com



Adult and Child CPR/AED

Learn how to save a life! In this five-hour course provided by the American Red Cross, gain knowledge in rescue breathing, choking rescue, adult and child CPR, accessing emergency medical services (EMS), how to prevent heart disease, and how to use an automated external defibrillator (AED) for victims of sudden cardiac arrest.



Cost: \$65
To register and for more information visit
www.redcrossbayarea.org or
call 1-888-4-HELP-BAY (1-888-443-5722)

Saturday, October 30, 2010
2 - 7 p.m.

Pacific Heights Health Club
2356 Pine Street
San Francisco, CA 94115

At Spruce, a Sleek and Sexy Saloon

By CHRIS BARNETT

LAST TIME 3640 Sacramento Street was a popular address when in the late 1930s when elegant automobiles such as Packards, Cadillacs and probably a collector's Duesenberg were parked and pampered by skilled mechanics there.

The onetime garage has seen countless restaurants and businesses come and go. But the current occupant, Spruce, has no shortage of people clamoring to be tended to in style. Since opening in August 2007, the sleek restaurant has amassed a strong following of neighbors who stop by regularly for exceptional food and attentive service.

But for me, it's the bar off to the right that is of special interest — and among the best in our hood. Example: While countless saloons trumpet their list of 50 different martinis, Spruce bar manager Brandon Clements scoffs that's cheap pandering to trends. He maintains that only one cocktail commands the mantle of martini — gin and dry vermouth.

He concedes the same drink, made with a flavorless vodka, is an acceptable

second cousin if the customer can't abide the potency of gin.

"We have a different philosophy here," says the 31-year-old Clements, who signed on at Spruce three years ago as a bartender and was promoted to bar boss a year later. He is also in charge of the bar at the new and white-hot Café des Amis on Union Street, which is also owned by Spruce's parent company, the Bacchus

Management Group. "If someone orders an apple martini, which is basically gin and apple schnapps, we say, 'Why not create a cocktail that will really open their eyes?'"

The eye-opener? Clements and his colleagues behind the Spruce bar start by muddling a fresh apple, then add a dash of lemon juice, two ounces of the premium Russian Standard vodka, Calvados, Tuaca

and a hint of sugar. The mixture is shaken, double strained into a martini glass and garnished with a thin slice of apple skin.

"What we've done is create a new cocktail experience for the guest who is used to drinking vodka and some terrible, saccharin, artificially flavored apple liqueur," he contends. "Now you're introducing people to something they may not have tried — Calvados, a French apple



"We have a different philosophy here."

— BRANDON CLEMENTS, bar manager of Spruce

fillmore
farmers' market

saturdays,
9am - 1pm

the freshest selection of
locally-grown
produce direct from the farmer
all year-round

we gladly accept EBT

fillmore st.
& O'farrell st.

Your Food,
Your Community,
Your Farmers Market

pcfma.com
1.800.949.FARM

Keep your visitors
in the neighborhood

Artist's Inn
B & B

2231 Pine Street
Between Webster/Fillmore
415.346.1919 • www.artistsinn.com

CAFÉ-RESTAURANT
CATERING

2210 Fillmore
(at Sacramento)
San Francisco
415.921.2956

CELEBRATING 30th ANNIVERSARY
FILLMORE LOCATION

www.cafelamed.com

World Famous GOSPEL BRUNCH

Join us for an uplifting Sunday with gospel music and Chef Lawrence's soulful brunch in the historic Fillmore. Seatings at 11:00am & 1:00pm. Reservations recommended.

1300
ON FILLMORE

open seven days a week

the Fillmore district, 1300 Fillmore street in sf
san francisco, ca 94107

public garage and weekend valet parking

RESERVATIONS
415.775.7000 or www.1300onfillmore.com

brandy — or considered as an ingredient in a cocktail."

At \$12, Spruce's price for this labor-intensive libation is a deal.

And Spruce is full of other pleasant surprises. Among them is the interior, designed by Stephen Brady, who's also credited with designing Ralph Lauren retail stores. The high ceilings are untouched from the garage's original construction, and the beams and rafters are painted black to virtually and visually disappear. The walls are upholstered in dark chocolate mohair.

The space is imaginatively accessorized. A half dozen silver shakers are clustered in a corner waiting for their next assignment. The bar is anchored at each end by contemporary white lamps you might find in a tastefully decorated living room, perfectly scaled and not overwhelming. Even the art is unexpected and original.

And instead of the basic barstool, 14 tall chairs covered in deep gold faux ostrich line a long, L-shaped thick slab of Carrera marble.

Behind the bar, a pair of gold-leaf framed mirrors with glass shelving hold a 300-bottle "library" of popular, premium and rare liquors. Clements, who can regularly be found behind the bar, describes it this way: "For me, it's like a kid in a candy shop. We have everything a bartender or a discriminating guest could possibly want at our fingertips." Take, for example, the Jim McEwan Celtic Hartland single malt Scotch, barrel aged for 42 years, served in glassware designed by a Scottish company, Glencairn, expressly for single malt Scotch. Price: a mere \$76.

Clements, a partner in Bacchus along with founder Tim Stannard and wine and spirits director Andrew Green, have just ordered their third cask of Scotch from Glenfarclas, one of Scotland's last remaining family-owned distilleries. They also buy a barrel of premium Pappy Van Winkle bourbon, which is privately bottled for them. The 15-year-old straight bourbon is rich and sweet and has tastes of vanilla, cinnamon and cardamom.

"We charge \$16 a pour and recommend it should only be mixed with ice and water, if you have to mix it at all," Clements says. "When you get whiskies of a certain level, it's better to appreciate them on their own."

In the end, though, it's Spruce's cocktail list that sets it apart from other area saloons. In addition to classics such as a Whiskey Smash, Sazerac, Pimm's Cup and a Dark and Stormy, Clements has 10 of his own creations as house specialties.

One that caught my eye and tongue is the Spruce Goose. It's a blend of Grey Goose vodka, Douglas Fir brandy, Calvados, pure maple syrup, lemon and lemon bitters, sold for \$13. Cocktail list drinks range from \$11 to \$14.

Now, the biggest and most pleasant surprise of all. Despite the masculine decor, the bar at Spruce — open from noon until late at night — often has more women guests than guys, shattering any notion that this is a male preserve. It isn't. Maybe it's because you can order anything off the dinner menu and eat at the bar, or maybe it's because women simply feel comfortable here. But it's a welcoming hangout, and not least for those who live nearby in the neighborhood.

Curbside Café
Under new ownership!
French-American cuisine
since 1989

Serving breakfast, lunch & dinner, as well as fabulous weekend & holiday brunches

Fresh lunch boxes to go

2417 California at Fillmore
415.929.9039
www.SFCurbside.com

Monday-Friday 9am - 10pm
Weekends 8am - 10pm

Chouquet's
RESTAURANT

Chouquet's, at 2500 Washington Street at Fillmore, welcomes two new specials to its offerings.

Diners can enjoy a delicious, classically prepared French 3-course dinner (appetizer, entrée and a dessert) for \$29.95 per person.

This special is available every night from 5:30pm to 7pm. Also, on Mondays all bottles of wine are 50% off.

Lunch daily 11:30 - 3
Dinner nightly 5:30 - 10
Weekend brunch: 10 - 3

415.359.0075 • www.chouquets.com

Bar **Café**

FLORIO

Enjoy our selection of Fine Wine on Tap — a Green alternative to traditional bottling & packaging

Look for Florio Café & Bar on Facebook. Become a fan!

twitter.com/floriosf
floriosf.com

UNIVERSITY OF THE
PACIFIC
Arthur A. Dugoni
School of Dentistry

Farmers Market

**Eat Healthy
Feel Good
Save Time & Money**

**Introducing:
A NEW Farmers Market at the Dental School!**

**Wednesdays
11:00 a.m. - 2:00 p.m.
BEGINNING SEPTEMBER 1, 2010**

University of the Pacific
Arthur A. Dugoni School of Dentistry
First Floor Plaza
2155 Webster St. (at Sacramento)
San Francisco

FEATURING
Organic produce from Ledesma Family Farms
Farm-fresh fruits and produce from J & J Ramos Farms
Oral health info table and giveaways

| | |
|---------|---|
| Brady | ✓ |
| Clay | ✓ |
| DeMarco | ✓ |
| Quarry | ✓ |
| Wall | ✓ |
| Webster | ✓ |
| Wells | ✓ |
| Wright | ✓ |
| Wright | ✓ |
| Wright | ✓ |

INTRODUCING OUR NEW TAKE AWAY CATERING MENU

Thanks for voting us
Best Pizza
in 747 Magazine's 2010
Reader's Choice Awards!

PIZZERIA DELFINA
— SAN FRANCISCO —

Porta Via
Take-Away Platters...

- are available at Pizzeria Delfina California St.
- require 2-day advance notice.
- serves 10-12 people

Insalata Tricolore
Arugula, radicchio, and Endive, w/ Lemon Vinaigrette and Grana Padano

Albacore Tuna Conserva
Preserved in house, w/ Marinated Cannellini Beans and Watercress

Fresh-Stretched Mozzarella
w/ Wild Arugula, Caciotta, and Extra Virgin Olive Oil

Spicy Cauliflower
w/ Calabrian Chiles, Capers, and Breadcrumbs

Pollo al Diavolo
Fulton Valley Chicken rubbed with Peperoncino, Black Pepper, and Rosemary

Ziti w/ Meatballs, Sausage, Tomato, Mozzarella, Ricotta

Lasagna w/ Escarole, Ricotta, Tomato, Mozzarella

Neapolitan Meatballs in Sugo
Two Dozen Meatballs (Pork, Beef, and Veal) Served in Tomato Sauce. Comes with Olive Oil Crostini

Amarena Cherry Sundae Kit
Vanilla Gelato, Amarena Cherries, Whipped Cream, Candied Pistachio, Chocolate Sauce

All Bottled Beverages available at 10% off the list price.
Compostable place settings and serving utensils available.

2406 California Street | 415-440-1189
www.pizzeriadelfina.com

ELITE

The Elite Cafe
Established 1981

2049 Fillmore Street • 415.67.ELITE
www.TheEliteCafe.com

NEIGHBORHOOD artist Veerakeat Tongpaiboon has a new exhibition of his dynamic cityscape paintings this month at the Thomas Reynolds Gallery, his longtime artistic home at Pine and Fillmore.

It's the 16th year he has shown at the gallery. But this time he won't be shutting between his art and his day job at his family's restaurant. Neecha, the admired and affordable Thai spot at the corner of Steiner and Sutter, closed at the beginning of August.

"I'm a full-time painter now," he says. "It's about time."

He first came from Thailand to San Francisco in 1988, determined to make his mark as an artist. He had been painting since he was 10 years old. As a teenager, he won high praise for his art and the top prize in three international painting competitions. But his family frowned on his desire to be an artist and pressed him to follow a more practical path. A degree in design gave him opportunities with his brother, a Bangkok architect. But he wanted something more.

He persuaded his mother to let him come to San Francisco to live and work with her younger sister, who had just opened Neecha, and to further his education.

Almost immediately he enrolled in the master's program at the Academy of Art, pursuing his artistic dreams while waiting tables at the family restaurant. And he found his muse in the streets of San Francisco.

"The streets, the hills, the light — candy-colored houses and everything upside down," he says. "That's what I wanted to



Veerakeat Tongpaiboon: free to paint now that his family's restaurant has closed.

Back in the Studio

'I'm a full-time painter now. It's about time.'

capture. In Thailand nobody would paint a house pink."

At his graduate exhibition in 1994 he met Thomas Reynolds, a lawyer-journalist with an interest in art — and in the Fillmore neighborhood. When Reynolds learned the young artist also lived in the neighborhood and featured it in many of his paintings, he rented a small space for six weeks to exhibit Veerakeat's paintings.

That six-week experiment has turned into a successful 16-year partnership between artist and gallery owner.

All the while, Veerakeat continued to work in the family restaurant. His involvement increased after they opened a second location in Oakland. And it increased still more when his aunt was injured in an auto accident.

"It's a family business," he says. "You can't get away. If they call, you have to be there."

When the decision was made to close Neecha, he was excited by the prospect of having more time to paint.

"In the past I had to do something fast," he says. "But now I have more time. Now I don't have to run to the restaurant anymore. I have all the time I want to paint — every single minute. I have more focus."

His new exhibition, like most of his earlier ones, concentrates almost entirely on San Francisco. Yet there is more detail in many of these paintings. And there are more figures, too.

"I've come a long way," he says, "maybe more than half way. But I haven't really gotten to that point I want to go. Now I have to do something that satisfies me the way I want."

One thing seems certain: San Francisco will continue to be his primary subject.

"I love San Francisco," he says. "I feel comfortable here. It's not only about the landscape or the buildings — it's about the culture, too." He has traveled to other parts of the country and liked them, but less so.

"No matter where I go, I don't love it like San Francisco," he says. "In other places, they look at me differently. It seems like everybody's the same here — that's what's special about San Francisco. People live together like one nation — not like other cities."

The exhibition of Veerakeat Tongpaiboon's recent paintings continues at the Thomas Reynolds Gallery, at 2291 Pine Street, through October 23. It is online at thomasreynolds.com.



Filipino jazz fest returns

The third annual San Francisco FILIPINO AMERICAN JAZZ FESTIVAL comes to Yoshi's on Sunday, October 10 from 6 to 9 p.m. Among the headliners are composer-pianist-vocalist Primo Kim, appearing with guest vocalist Jo Canion (above); Tokyo's premier jazz diva Charito; and, from Manila, the powerful singer Sandra Lim Viray.

The roots of Filipino jazz in San Francisco can be traced to early Filipino immigrants who settled in and around the Fillmore District and other areas. Jazz pioneers such as Flip Nunez, Jo Canion and Rudy Tenio created a legacy that many artists have since followed. Today, Filipino jazz is gaining wider recognition as artists — including Primo Kim, Charito and Sandra Viray — are recording and performing worldwide.

Events leading up to the festival are planned at Sheba Piano Lounge on October 6 and at the Jazz Heritage Center on October 7. Tickets for the festival are \$40 in advance, or \$45 at the door. For more information, go to sfjazzfest.com.

It's a Big Month for Latin Sound at Yoshi's

By ANTHONY TORRES

YOSHI'S is featuring some well-known musical wizards this month who traverse a range of musical territories — including J. Geils Band front man Peter Wolf, acoustic guitar virtuoso Leo Kottke and Rock & Roll Hall of Famer Dave Mason, founding member of the classic rock group Traffic.

In addition to these artists of great renown, there are a couple of acts featuring players of great repute in their areas of musical discourse who promise to bring a few nights of musical fun: Grupo Fantasma and The Latin Kings All-Stars.

Coming out of Austin, Texas, GRUPO FANTASMA is known as a funky hard-working Latin orchestra that has routinely backed Prince and played with the likes of the legendary salsa pianist Larry Harlow, who recently appeared at Yoshi's with Mazel Tov Mis Amigos. The group presents a heavily inflected cumbia-based blend of salsa, son, mambo, Afro-funk, bolero, jazz and folkloric psychedelia.

Grupo Fantasma's contemporary Latin sound, while familiar, is unique, with its pulsating, driving beat that sets the tone for engaging a range of social issues through lyrical commentary. Grupo Fantasma has a reputation for being a good-time party band. When seen live, they have more than enough rhythm and energy for the two nights of dancing and festivity they



Grupo Fantasma is coming to Yoshi's this month.

will bring to Yoshi's on October 7 and 8.

The LATIN KINGS ALL-STARS are also coming in October, with 8 and 10 p.m. shows on October 15. This group speaks directly to San Francisco as a seedbed of Latin rock. The show celebrates the influence of Latin music in the Bay Area over the last 30 years, spawning Latin rock, Latin R&B and impacted funk.

The music indirectly alludes to a range of forgotten Latino artists and musical histories that include wide-ranging styles

that hark back to saxophonist Danny Flores' 1958 hit "Tequila," rock pioneer Richie Valens, East L.A.'s Thee Midnites — among the first to integrate horns, tinbales, congas, keyboards and electric guitars — and other groups like Sam the Sham and the Pharaohs ("Woody Bully"), Question Mark and The Mysterians ("96 Tears") and Rosie and the Originals ("Angel Baby").

The music of these artists is based in a blend of R&B and rock with undercurrents of distant Latin musical motifs; what was unique to the Bay Area was the diverse blend of people from the Caribbean, Central America and South America, intermingling with Mexicans and Chicanos.

It was here that Carlos Santana in the 1960s began combining electrified blues guitar with Afro-Cuban rhythms, which brought blues, rock, salsa, and percussion instruments and modalities together.

The Latin Kings All-Stars will honor this history with a musical tribute to Bobby Espinoza, formerly of the group El Chicano, and an original Latin King.

The Latin Kings are bringing a 22-piece band that will include multiple musical veterans from all around California who participated in this musical history. This should be an incredible night of celebrating the history of Latin music in the San Francisco Bay Area. Hold on to your hats, because there's no telling who the other special guests may be.

• gourmet • healthy • mouthwatering • delicious • seasonal • local • sustainable •

Debbie Does Dinner

Freshly prepared meals • Delivered to your door
Full service catering

415.643.6438 | DebbieDoesDinner.com

\$10 off* Plus FREE Cooler Bag!

* New customers receive \$10 off their first order of \$50 or more before tax and delivery. Not to be combined with other discounts or promotions.

• nutritious • international • easy • homestyle • made from scratch • convenient •

a la carte • all natural • green • chocolate • best cookies ever • brownies • cupcakes • pot pies • turnovers • comfort • homestyle • organic • fresh • flavorful • diverse • colorful • scrumptious • tasty/delicious • yum yum • kid friendly • generous • creative • beautiful

"Oh garden of fresh possibilities!"
Frederico Garcia Lorca

JUDITH SKINNER
Fine Gardening
38 Years of Experience
jfskinner@aol.com
415.776.8272

KAREN PALAMOS, M.F.T.
PSYCHOTHERAPY

Specializing in therapy with visual artists, writers, musicians and other creative people

For individuals and couples who experience

- creative blocks
- anxiety
- debilitating self criticism
- isolation and related concerns

(415) 835-2199
Bush Street @ Octavia
CA LICENSE MFC38971

St. Dominic's Catholic Church

MASSSES
SUNDAY
5:30 pm (Saturday Vigil)
7:30, 9:30 & 11:30 am
1:30, 5:30 & 9:00 pm
WEEKDAYS
6:30 & 8:00 am & 5:30 pm
SATURDAY
7:40 am Rosary, 8:00 am Mass
PRAYERS & SACRAMENTS
The church is open for prayer all day and into the early evening.
Liturgy of the Hours (Daily)
Morning Prayer: 7:15 am-Sat 8:00 am
Evening Prayer: 5:00 pm
Reconciliation: Sat 5:00 pm,
Sun 7:00, 9:00 & 11:00 am, 5:00 pm
Adoration of the Blessed Sacrament
Mon & Wed 8:30 am & 6 pm
Tue & Fri 8:30 pm

2390 Bush St. (at Steiner) • (415) 567-7824 • Free Parking

Bringing San Francisco to life.
The new ZephyrSF.com

Search the entire MLS.
Explore neighborhoods.
Follow market trends. Research schools.
Register to search solds,
get updates & more.

Zephyr Real Estate. We're all about San Francisco.

Pacific Heights • 415.674.6500
Upper Market • 415.552.9500
Castro • 415.552.9500
West Portal • 415.731.5000
Noe Valley • 415.695.7707
Potrero Hill • 415.315.0105

ZEPHYR
REAL ESTATE

www.zephyrsf.com

'Howl' Premiered Here — and Now It's Back on Screen

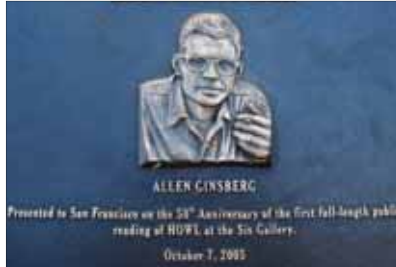
THE legendary poem *Howl* — which had its premiere on Fillmore Street in 1955 — was 29-year-old Allen Ginsberg's first published work. But it instantly established him as a vital new voice for rapidly changing times.

Gritty and tender, rife with references to sex and drugs, driven by equal parts alienation and ecstasy, haunted by memories of childhood, oppression and boyish love and erupting in a rush of language with the rhythmic urgency of a jazz riff, the poem was a shock to the system in the midst of the grey flannel, Eisenhower '50s. In an instant, *Howl* forecast the heat and fury of the '60s and helped to usher in cultural shifts that are still reverberating.

It all began on what Jack Kerouac would come to call the "mad night" of October 7, 1955. That's when Ginsberg read *Howl* for the first time at the soon-to-be-legendary Six Gallery — a former auto-body shop turned Bohemian hangout at 3119 Fillmore Street — and left the crowd of hipsters in tears.

Among those in the audience was City Lights publisher Lawrence Ferlinghetti, who was so exhilarated he sent a telegram to Ginsberg the next day offering to publish it. "*Howl* knocked the sides out of things," Ferlinghetti said later. That turned out to be true in more ways than one: *Howl* would soon become not just a game-changing literary sensation, but also an incendiary court battle.

On March 25, 1957, U.S. Customs seized all the copies of *Howl* en route to America from England, where the second



A plaque at 3119 Fillmore Street commemorates the first reading of 'Howl' on what Jack Kerouac called a 'mad night.'

edition had just been printed. Two months later, local police arrested Ferlinghetti, charging him with selling obscene material. Thus began the summer-long prosecution of *The People v. Ferlinghetti*. The high-profile trial that ensued — one that involved as many literature professors as lawyers and put the power of words itself on trial — would become a watershed freedom of speech case, opening the door to greater creative freedom.

Ginsberg went on to become one of the most highly regarded writers of the late 20th century, as well as an untiring cham-

pion of sexual and spiritual liberation, of human and civil rights, perennially battling with his trademark mischievousness to create a more open and engaged society.

Howl, however, took on a life of its own. More than a poem, it became many other things: a manifesto, a call to arms, a generational catharsis, a declaration of gay pride, a flashlight into the soul of post-industrial humanity, a love song and a lasting symbol of fearless creative rebellion.

Could *Howl* also be a movie? That ques-

tion was put to filmmakers Rob Epstein and Jeffrey Friedman on the 50th anniversary of the poem's publication by Bob Rosenthal, the secretary of Allen Ginsberg's estate.

What began as a conventional documentary soon evolved into a hybrid of drama, imagination and reality — much like Ginsberg's writing.

"We'd been given this treasure, but now we were faced with, 'How in the world do we actually do this?'" recalls Rob Epstein. "We set out to find a way to bring together all these different elements — the text of the poem, Ginsberg's life and ideas, this landmark trial — to create a multi-faceted picture of the creation of *Howl* and the world's response. The thrilling part was that we were inventing the form as we went along."

"As a film, *Howl* is a lot of things," says Jeffrey Friedman, "but I hope audiences will relate to it as the story of a man finding a way to be true to himself. Allen Ginsberg was searching for a way to express fully who he was — and, in doing so, he changed himself and the culture."

Adds Epstein: "Authenticity is something as human, beings we're always attracted to — we're attracted to it in our leaders, in our partners and yearn for it in our own lives — and I think the search for that kind of total honesty is what makes Ginsberg and *Howl* continually relevant."

On September 24, *Howl* the movie premiered — like the poem itself — on Fillmore. It continues during October at the Sundance Kabuki Cinemas at Fillmore and Post.

FIRST PERSON

Fillmore poet wins chapbook competition

I have been writing poetry since I was a teenager. Finally, after almost 40 years, a book of my poems is being published. It's just a chapbook, a small volume of about 25 pages, that won the Negative Capability Press international chapbook competition.

When you spend a lifetime writing, every now and again characters just show up. In the case of these poems, these characters showed up at different times. They came into my head and said what they wanted to say, in forms of their

own choosing, and then left. The book is called *Three Visitors*. The first visitor is a data entry clerk from San Francisco in the early part of this century. She is haunted by the possibility she may have been

Guinevere in a previous life and she tends to speak in French and Welsh forms. The second is a young Asian-American woman, also from San Francisco but from the late 1970s, the heyday of the punk scene. For reasons I can't fathom, she chose to speak in a form worked out by the Italian Nobel Laureate, Eugenio Montale. Last there is a man from around the time of the Buddha, who worked, probably as a gravedigger, somewhere on the Gangetic plain. He speaks in eight line chunks of blank verse.

The book is available through negativecapabilitypress.square-space.com.

— MARK J. MITCHELL



Many scenes in the *Reve* series were shot in the neighborhood.

It's Off to Spain for a Local Filmmaker's Grand Debut

By SUSAN LIEN WHIGHAM

I'M A San Francisco-based artist and storyteller. Last year I began experimenting with film editing and, through this process of discovery, became passionately excited about the prospect of making films. Suddenly a world of possibilities opened. And that's how I began working on a narrative fiction short film series I called *Reve*.

I hammered out a script for a short film and envisioned it as the first chapter in a series of shorts. Starting a cast of local friends, and using the neighborhood as the setting, we filmed the first episode, "Lost and Found," over the course of a month.

We began filming episode two, "Leaving Styx," in July 2009. An apartment at the corner of Broadway and Fillmore is where two of the main characters first meet.

Post-production wrapped in March of this year. I felt confident the second episode was solid enough to be considered for screening anywhere and submitted it to various festivals around the world.

I was thrilled to receive word in June that "Leaving Styx" was accepted as a selection at the Marbella International Film Festival in Marbella, Spain, and will be screening there this month. Described by a Spanish friend as "Spain's answer to Cannes," the festival draws an extensive international selection of short films — more than 500 were submitted this year — in addition to feature films and other works of independent film.

I'm looking forward to the trip along the scenic southern coast of Spain to Puerto Banus, an once-quiet fishing village that has evolved into one of Spain's top travel destinations.

I chose the Fillmore neighborhood as

a backdrop for this series because this is home for me. I moved to Pacific Heights seven years ago and have loved it here so much that it simply seems natural to set the series here. We've already begun production on episodes three, four and five, and Fillmore — this time between Jackson and Washington — gets a cameo in the opening sequence of episode three.

In addition to being a love story, *Reve* is also a personal exploration of another of my passions: dreamy interpretation. The main character, Walker, while coping with grief following the death of his young son, finds guidance and self-empowerment through a series of waking dreams. These dreams lead him to Reve, his love interest.

You can learn more about the films at reverieseries.com. And if you're in Spain this month, join us at the Marbella festival.

Early Detection Saves Lives

Peripheral Artery Disease (PAD)

PAD is a serious disease affecting 8 million Americans and nearly 1 in 3 people age 70 and over. When fatty deposits build up in the arteries it can lead to stroke, heart attack, amputations, and even death. The **UCSF Heart and Vascular Center** is home to some of the world's top vascular specialists who provide the most advanced diagnosis and treatment available for PAD.

If you are over age 50 and have any of the following, you may be at risk:

- Diabetes
- Smoke or previously smoked
- Leg pain when walking or foot pain at night
- Poor healing of minor wounds
- High blood pressure or abnormal cholesterol
- Heart disease, prior heart attack or stroke

Talk to your doctor to see a UCSF vascular specialist.

Three convenient locations:

- UCSF Medical Center at Parnassus
- Greenbrae (Marin County)
- Mission Bay (Opening in November)

Visit www.vascular.surgery.ucsf.edu or call (415) 353-2357

UCSF Medical Center
Heart & Vascular Center

JANET MOYER

Landscaping

Janet Moyer Landscaping is a full-service landscaping company specializing in sustainable landscapes

One of the "100 Fastest Growing Private Companies" in the Bay Area
SF Business Times, 2008 & 2009

Award winning design-
"Outstanding Achievement" Award
California Landscape Contractors Association, 2007 & 2008

415-821-3760 • 1031 Valencia Street, San Francisco • jmoeyrlandscaping.com

Landscape Contractor License #53919 • Pest Control License 36389

BLOOMING

Floral Design

Wedding Flowers • Silk Flowers • Fresh Flowers
Bonsai • Ikebana Tools & Gifts • Award Winning Design

2120 SUTTER STREET • 415.749.1533
(between Steiner & Pierce) • bloomingfloraldesign.com

Presidio Heights
\$2,297,000
Prime Presidio Heights Jewel Box.
3800/2 SBA home includes living room with wood burning fireplace, gourmet kitchen with family room and direct access to landscaped garden, 1+ car garage and original architectural details.
3300Walnut.com

Laurel Heights
\$1,995,000
Extensively Remodeled.
Spectacular House. Open contemporary plan, gorgeous walk-out garden, and views to the ocean. A few doors from Laurel Hill playground and steps from Laurel Village shopping. This 4800/3 SBA home blends indoor/outdoor living with decks at every level.
149Collins.com
Yola Haddad Ozturk
(415) 516-7138

Presidio Heights
\$1,385,000
Beautiful Luxury Condominium.
3 BD/2BA, 1+ car garage parking, hardwood floors, 10 foot ceilings, open living room, dining area, state-of-the-art kitchen, built-in banquette, south facing deck, opens to shared yard, deeded storage room. Extensively remodeled in 2003.
3683Sacramento.com
John Dallas
(415) 321-4357

Lone Mountain
\$995,000
Rare and Beautiful 3BD/3BA Light Filled Top Floor Flat.
Open and lofty living and dining room great for entertaining. Fireplace. Master bedroom with patio, luxurious bath and walk-in closet room with custom organizers. Gourmet kitchen, stainless steel appliances, and 2 car parking.
76BaumtonAve.com
Lucy Yeung
(415) 321-4204

Pacific Heights
\$899,000
Prime Location / Complete Remodel.
This south facing TIC is bright and airy and has been lovingly remodeled. Close to Laurel Village, Sacramento Street shops and the Presidio, this 2BD/2BA home includes a formal dining room, hardwood floors & stainless appliances.
3234WashingtonSt.com
Mary DeVries
(415) 321-3106

Jordan Park
\$699,000
Charming 2BD/1BA Condo With Garden.
This lovely condominium is spacious and bright with 2 generous bedrooms, formal dining room, elegant living room with direct access to the common garden, gourmet kitchen with stainless steel appliances, and 1 car parking.
12Commonwealth-10.com
Diana Kaus Koll
(415) 321-4208

Near Bliedeman Historic District
\$475,000
Charming TIC. This lovely, remodeled 2BD/1BA home is located on a quiet, tree-lined street. Built in 1914, this appealing unit features a stylishly remodeled kitchen with stainless steel appliances & breakfast bar with pendant lighting.
2025Ottawa-1.com
Barbara Stein Friedman
(415) 321-4246

Pacific Heights
\$429,000
Remodeled Studio With Alcove in Prime Location.
Want charm, convenience and excitement of the city? Serenity too? This spacious remodeled studio with sleeping alcove for dining, sleeping offers all. Plus large layer perfect for desk/computer.
1775Brookway-2.com
Paula Pagano
(415) 860-4209

The City's Best

We are a proud member of the Who's Who In Luxury Real Estate international network, affiliated with 5,108 offices in 65 countries, and the world's foremost luxury real estate website, luxuryrealestate.com.

HILL & CO.
REAL ESTATE
(415) 921-6000 • www.hill-co.com

SF Business VOTES
2010

Vote for a Better Economic Future on November 2!

The November General Election Ballot contains critical initiatives that will impact San Francisco residents and businesses for years to come. Join your neighbors, local merchants and SF Forward in voting for jobs and a better economic future on November 2, 2010!

VOTE YES

Prop A Earthquake Retrofit Bond
Prop G Fix Muni Now
Prop H Prohibit Dual Office Holding
Prop K Hotel Tax Clarification
Prop L Civil Sidewalks

VOTE NO

Prop C Force Mayor to Appear at Board Hearings
Prop J Job Killing Hotel Tax Increase
Prop M Board of Supervisors Managing Police Department
Prop N Job Killing Property Transfer Tax
Prop 23 Protect Landmark Clean Energy Law (AB 32)
Prop 24 Jobs Tax

Learn more at: www.sfchamber.com/votingguide

SF Forward - the Political Action Committee (PAC) of the San Francisco Chamber of Commerce - is the political voice for businesses and residents who support sound economic policy and an exceptional quality of life for all of San Francisco.
www.sfchamber.com/sfforward

華山

DEMOCRAT

BERT Hill

BART BOARD

Endorsements (Partial List)

The Democratic Party
 Supervisor David Chiu*
 Supervisor Sean Elbourne*
 Supervisor David Campos*
 Supervisor John Avalos*
 Supervisor Eric Mar*
 Supervisor Ross Mirkarimi*

Democratic Clubs
 Richmond District Democratic Club
 Irish-American Democratic Club
 Mexican-American Democratic Club
 Democratic Women's Forum of SF
 Alice B. Toklas LGBT Democratic Club
 Harvey Milk LGBT Democratic Club

Other Organizations (in random order)
 Sierra Club
 San Francisco Tomorrow
 SF League of Conservation Voters
 San Francisco Bicycle Coalition
 Rescue Muni
 SF Green Party
 SF Women's Political Committee
 San Francisco for Democracy

Labor (BART)
 Amalgamated Transit Union Local 1555
 AFSCME Local 3993
 SEIU 921

*plus for identification purposes only, not intended as agency endorsement

Get to know Bert Hill:

"Bert Hill gets it and he has truly visionary ideas about making BART work better for San Francisco."

Jason Henderson
 Professor SFSU

Read more testimonials at www.Bert4BART.org

"SF deserves a better BART!"

www.Bert4BART.org

Bert Hill with his grandson and future BART rider, Warren, photographed by Mitchell Mustacchi

NEIGHBORHOOD HOME SALES

| Single Family Homes | BR | BA | PK | Sq ft | Date | Asking | Sale |
|---------------------|----|-----|----|-------|---------|-----------|-----------|
| 2105 Pine St | 6 | 2.5 | 2 | | 8/16/10 | 2,290,000 | 2,109,400 |
| 2781 Union St | 3 | 2.5 | 1 | | 9/3/10 | 2,195,000 | 2,200,000 |
| 2231 Franklin St | 5 | 4 | 2 | 3471 | 9/9/10 | 2,300,000 | 2,219,000 |
| 2515 Gough St | 5 | 3.5 | 2 | 3780 | 8/17/10 | 2,995,000 | 2,800,000 |
| 2846 Fillmore St | 4 | 3.5 | 2 | 3765 | 9/2/10 | 3,249,000 | 2,975,000 |
| 315 Laurel St | 6 | 4.5 | 2 | | 9/9/10 | 3,395,000 | 3,150,000 |
| 2760 Broderick St | 5 | 5.5 | 2 | 4600 | 9/8/10 | 3,400,000 | 3,410,000 |
| 37 Walnut St | 5 | 4.5 | 2 | 3999 | 8/19/10 | 3,950,000 | 3,675,000 |
| 3740 Clay St | 5 | 4.5 | 1 | | 8/18/10 | 3,950,000 | 3,700,000 |
| 2460 Green St | 4 | 3.5 | 2 | 5233 | 9/10/10 | 3,950,000 | 3,800,000 |
| 2725 Jackson St | 5 | 5.5 | 2 | | 8/25/10 | 4,350,000 | 3,900,000 |
| 2755 Fillmore St | 5 | 4.5 | 2 | 4064 | 8/17/10 | 4,995,000 | 4,970,000 |

| Condos / Co-ops / TICs / Lofts | BR | BA | PK | Sq ft | Date | Asking | Sale |
|--------------------------------|----|------|----|-------|---------|-----------|-----------|
| 1450 Post St #205 | 0 | 1 | 1 | 519 | 8/16/10 | 129,000 | 125,000 |
| 2040 Franklin St #808 | 1 | 1 | 1 | | 9/14/10 | 475,900 | 460,000 |
| 2731-B California St | 2 | 1 | 1 | | 8/26/10 | 595,000 | 595,000 |
| 3010 Sacramento St #1 | 2 | 1 | 1 | | 9/3/10 | 599,000 | 599,000 |
| 1835 Franklin St #603 | 2 | 2 | 1 | 1400 | 8/25/10 | 644,000 | 600,000 |
| 2420 Geary Blvd #C | 2 | 2 | 1 | 1484 | 8/18/10 | 615,000 | 600,000 |
| 1914 Pine St #2 | 1 | 1.5 | 1 | 1190 | 9/10/10 | 619,000 | 605,000 |
| 1450 Post St #1115 | 2 | 1.5 | 1 | 1067 | 8/25/10 | 675,000 | 610,000 |
| 1966 Pacific Ave #203 | 2 | 2 | 1 | 1115 | 9/14/10 | 719,000 | 719,000 |
| 1914 Pine St #3 | 2 | 1 | 1 | 1180 | 8/31/10 | 749,000 | 725,000 |
| 1880 Steiner St #408 | 2 | 2 | 1 | 949 | 8/19/10 | 749,000 | 736,500 |
| 1824 Bush St | 2 | 1.75 | 1 | 1370 | 8/31/10 | 825,000 | 780,000 |
| 2299 Sacramento St #18 | 2 | 1 | 1 | 1250 | 8/24/10 | 799,000 | 800,000 |
| 1740 Franklin St #10 | 3 | 1.25 | 1 | 1688 | 8/20/10 | 1,325,000 | 890,000 |
| 1640 Broderick St | 5 | 2.5 | 2 | 4133 | 8/31/10 | 995,000 | 1,015,000 |
| 1988 Greenwich St | 3 | 2 | 2 | 1605 | 9/9/10 | 879,000 | 1,097,500 |
| 2870 Washington St | 3 | 2 | 1 | 2455 | 9/8/10 | 1,189,000 | 1,165,000 |
| 2200 Pacific Ave #9C | 2 | 2 | 1 | 1850 | 8/20/10 | 1,175,000 | 1,185,000 |
| 2747 Greenwich St | 2 | 1 | 2 | | 9/10/10 | 1,195,000 | 1,185,000 |
| 3284 Jackson St | 5 | 2.5 | 0 | | 9/1/10 | 1,675,000 | 1,600,000 |
| 2686 Union St | 3 | 2.5 | 1 | 2204 | 8/20/10 | 1,995,000 | 1,975,000 |

Average home price up to \$3.2 million

The average sales price of single family homes during the past month rose from \$2.7 million to \$3.2 million, suggesting growing confidence in the higher-end market. The increase can partially be attributed to continued low interest rates for jumbo loans and also to a wider inventory. Highlights of the properties sold during the month include two Fillmore Street beauties: 2755 Fillmore (left), a contemporary three-level home with sweeping Golden Gate views, which sold in less than three weeks; and 2846 Fillmore, which sold after two months on the market. Both sold for about 90 percent of their listing prices.

Although the number of condo sales decreased during the last month, one listing proved there is no lack of qualified buyers waiting for the right property to come along. A 3-bedroom, 2-bath condo — 1988 Greenwich, offered at \$879,000 — garnered 20 offers and ultimately sold for almost \$1.1 million. On the other end of the spectrum, apartment 808 at Jackson Towers at 2040 Franklin Street — a 1-bedroom, 1-bath unit — sold for \$460,000, only a slight increase from its 2001 sales price of \$438,000.

NEW LISTINGS: Notable new listings since Labor Day include the home of recently retired Williams-Sonoma CEO Howard Lester at 2939 Vallejo Street. The French Normandy-style 4-bedroom, 5.5-bath home is on the market for \$8.5 million, with an adjoining lot at 2921 Vallejo Street offered at \$2.25 million. Also new on the market is 2698 Pacific, a grand classic revival mansion designed in 1904 by Samuel Newsom and offered for \$14 million. A two-unit Tudor-style Mayta & Jensen renovation at 2149-S1 Jackson Street belonging to one of the four Cahill brothers was recently relisted at just under \$4 million. On the Pacific Heights block affectionately referred to as William F. Lewis Country, after the 19th century San Francisco architect, is a beautifully renovated Victorian at 2112 Baker Street listed at just under \$2.4 million.

— Data and commentary provided by VICTORIA STEWART DAVIS at Pacific Union. Contact her at vdavis@pacunion.com or call 345-3760.

The Queen Anne
HOTEL • SAN FRANCISCO

Old world charm with modern convenience and luxury

MENTION THE NEW FILLMORE FOR SPECIAL NEIGHBORHOOD RATES!

1590 Sutter Street • 415.441.2828
www.queenanne.com

Michael W. Perry & Company

Fine Custom Framing
 Antique Prints & Maps

1837 Divisadero • 415-563-8853
www.mwperry.com

■ GARDENS

Festival of Flowers coming to St. Mary's

The fourth annual Festival of Flowers will once again bring a bevy of blossoms to the Cathedral of St. Mary of the Assumption at 1111 Gough Street, on Cathedral Hill, during the first weekend of October.

Because it is also the 40th anniversary of the cathedral, floral designers and arrangers from throughout the Bay Area and beyond are coming together to create a special feast of color and scent in the soaring 19-story modern space. Workshops will explore flowers in art and the history of the cathedral. Music and food will also be presented.

For more information about the festival and a full schedule of events from September 30 through October 3, call 567-2020 or visit cathedraflowers.org.

The new garden takes advantage of the various levels of the lot to create separate spaces for different activities.

According to the Controller's Office Proposition N & J will cost jobs and hurt our economy.

NO on Prop J

If it Passes You'll Pay

www.economicrecoveryssf.com

PROPOSITION J - HOTEL TAX INCREASE

The City Controller writes that the tax will be responsible for "lowering occupancy, tourism spending, and tourism industry employment." This significantly higher tax will:

- Make San Francisco's Hotel Tax the highest highest in the nation
- Put us at a disadvantage when competing with other cities for conventions and events
- Damage our most important local industry

NO on Prop N

IF IT PASSES YOU'LL PAY

www.economicrecoveryssf.com

PROPOSITION N - REAL ESTATE SALES TAX HIKE

The City Controller writes that Proposition N will make San Francisco "less competitive and reduce job growth." The higher tax will:

- Raise commercial and housing rents
- Depress property tax values
- Threaten jobs and livelihood

You'll pay for these taxes with less economic growth and fewer jobs.

Vote No on Propositions N & J

To join our coalition or for more information, visit www.economicrecoveryssf.com

Paid by Economic Recovery San Francisco, No on J & N, sponsored by business associations, with major funding by Building Owners and Managers Association of San Francisco political action committee -independent expenditures and San Francisco Hotel Council



imagine the possibilities.

High-speed broadband access to the Internet empowers, transforms and enlightens.

That's why AT&T is embarking on one of the largest network upgrades in our history. We're bringing fiber optic technology built on the global standard of Internet Protocol (IP) to San Francisco.

imagine:

Your television, cell phone, laptop, PDA, digital video recorder, home appliances and so much more – working better because they work together *for you.*

We are currently meeting with San Francisco neighborhood groups. To request a meeting or to find out how you can help bring AT&T U-verse® to your neighborhood, please contact us today.

att.com/IPnetwork4sf

